

# FACT FILE AUCKLAND

## WHY CHOOSE TO STUDY IN OUR AUCKLAND SCHOOL?

### 5 reasons to study here

- Located within a beautiful historic building, featuring a large, outdoor courtyard
- Boasts a fantastic location right next to the Auckland Domain
- Travel to Waiheke Island, voted by Lonely Planet as one of the top destinations to visit
- School is an authorized Cambridge English Language Assessment center
- School is a member of English New Zealand

### Location and contact information

ADDRESS:	10 Titoki Street, Parnell, Auckland 1052
PHONE:	+64 (0)9 307 6507
FAX:	N/a
EMERGENCY CONTACT:	+64 (0)2 162 0119
AT THIS ADDRESS SINCE:	1984
PROVIDING ENGLISH COURSES SINCE:	1979



### School information

SCHOOL PRINCIPAL:	Giuliana Silveira
TOTAL NUMBER OF TEACHERS:	20+ (Full time teachers: 20+)
LANGUAGES SPOKEN BY STAFF:	Arabic, French, Italian, Japanese, Korean, Portuguese, Spanish
TEACHER QUALIFICATIONS:	All teachers have a formal TESOL qualification; many also have further qualifications.

### Accreditations and memberships

A member of  
**English  
New Zealand**

**NZQA**  
NEW ZEALAND QUALIFICATIONS AUTHORITY  
MANA TOHU MATAURANGA O AOTEAROA

### Is this school an exam center?

Yes, it is a Cambridge exam center.

# ABOUT THE SCHOOL

NUMBER OF BUILDINGS:	2
NUMBER OF FLOORS:	2
TOTAL NUMBER OF CLASSROOMS:	20 (Classrooms without windows: 0)
SCHOOL FACILITIES:	Wi-Fi (free), computer lab/ multimedia center, library, self study center, vending machine, garden, sun terrace/ patio, student lounge/ common room
WHEELCHAIR / DISABLED ACCESS:	No
EXTRA COST OF FACILITIES:	No
OTHER SERVICES PROVIDED:	Airport transfer, UPS (University Placement Service)
EXTRA COST OF OTHER SERVICES:	Transfer: \$120; UPS: \$500 (free with 16+ week course)
NUMBER OF COMPUTERS AVAILABLE:	50+
LEVELS OF ENGLISH OFFERED:	Elementary, Lower Intermediate, Intermediate, Higher Intermediate, Advanced
FIRST DAY AT SCHOOL:	Orientation starts every Monday at 08:15. This includes registration, an introduction to the school, a placement test, a tour of the local area and the distribution of class timetables. On their first day, students are expected to bring their passport, insurance card, Kaplan documents, a pen and some paper.



## SAMPLE CLASS TIMETABLE

Morning		Afternoon	
CLASS:	08:30 - 10:15	CLASS:	12:30 - 14:00
BREAK:	10:15 - 10:30	BREAK:	14:00 - 14:15
CLASS:	10:30 - 11:45	CLASS:	14:15 - 15:45

## SAMPLE SPECIFIC SKILLS CLASS TIMETABLE

Morning class (Monday to Friday)	Afternoon class (Monday to Friday)
N/A	N/A

## SCHOOL MATERIALS

MATERIALS PROVIDED FOR STUDENTS:

K +notes, K +tools, K +eXtra, Interactive whiteboards

IS THERE A BOOK DEPOSIT?

No

IS THERE A MATERIALS FEE?

Yes (Price: \$15/week (\$360 max))



## Courses and students

COURSES PROVIDED AT THIS SCHOOL:	Vacation English, General English, Intensive English, IELTS Preparation, Cambridge Exam Preparation, Intensive Business English, English for Academic Purposes, Academic Semester, Academic Year
SPECIAL / EXTRA COURSES PROVIDED:	English + Rugby
AVERAGE NUMBER OF STUDENTS PER CLASS:	13–15
MINIMUM AGE OF STUDENTS:	16
AVERAGE AGE OF STUDENTS:	22–25
STUDENTS PER AGE GROUP:	18-21: 32% / 22-25: 37.00% / 26-30: 14.00% / Over 30: 17.00%
TOP 10 STUDENT NATIONALITIES:	Japan, Korea, Saudi Arabia, Thailand, Brazil, Colombia, France, Chile, Germany, Switzerland

## School location and transport

	By foot	By bike	By bus	By subway/train
Time to the nearest café / restaurant:	15 minutes	3 minutes	5 minutes	N/A
Time to the nearest supermarket:	30 minutes	10 minutes	15 minutes	N/A
Time to the nearest post office:	30 minutes	7 minutes	10 minutes	N/A
Time to the nearest ATM / bank:	10 minutes	3 minutes	5 minutes	N/A
Time to the nearest sports center:	10 minutes	3 minutes	5 minutes	N/A
Time to the nearest hospital:	25 minutes	7 minutes	10 minutes	N/A
Time to the city center:	35 minutes	10 minutes	15 minutes	10 minutes



### AIRPORT TRANSPORT

CLOSEST AIRPORT: **Auckland Airport**

	Line or Number	Cost	Duration
Airport to city center by bus:	Sky Bus	\$18	45–60 minutes
Airport to city center by train:	N/A	N/A	N/A
International train station to city center:	N/A	N/A	N/A



# ABOUT AUCKLAND

FAMOUS LANDMARKS:

AKL Museum and Domain, The Sky Tower, Viaduct Harbour, Mission Bay

CUISINES WITHIN A 20-MINUTE WALK:

American, Chinese, European, Indian, Italian, Japanese, Mexican, Middle Eastern, Thai, Turkish, Vegetarian

TRANSPORT WITHIN A 10-MINUTE WALK:

Train

TOP 5 REASONS TO CHOOSE THIS CITY:

Gateway to the South Pacific, largest city in New Zealand, stunning location surrounded by beautiful nature, close to Waiheke Island, perfect environment for outdoor activities

WHAT MAKES THIS CITY UNIQUE?

Close to the Domain, easy access to public transport, amazing nationality mix, fantastic facilities

ALTERNATIVE THINGS TO DO:

Bungee off the harbour bridge, walk the Skywalk around the Sky tower, go surfing in Piha, climb up Mount Victoria in Devonport

CITY PERSONALITY:

Active, diverse, eco-friendly, friendly, green, ocean views, vibrant

## Examples of nearby cities to visit

WELLINGTON

Travel time: 60 minutes by plane, price of return ticket: \$250

QUEENSTOWN

Travel time: 90 minutes by plane, price of return ticket: \$325

## Regular social activities

VOLLEYBALL	Free
LASER TAG	\$20
MOVIE NIGHT	\$5
SEA LIFE AQUARIUM	\$24
MT. EDEN VISIT	Free
MUSEUM VISIT	Free
KOREAN BBQ BUFFET	\$20

## Typical 2-week social schedule

Days	First week	Second week
MON	Museum visit	Basketball
TUE	Laser tag	Sky Tower
WED	Movie night	Mt Eden walk
THU	Volleyball	Mini golf
FRI	Sea life aquarium	Auckland adventures
SAT	Action tours	Auckland adventures

Number of Social activities per week: 7

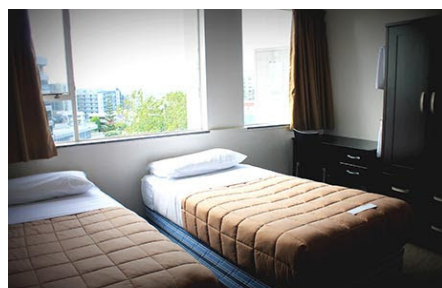


## LIVING COST (SAMPLE PRICES FOR ITEMS IN THIS CITY)

- Bottle of water: \$3
- Meal out for two: \$50
- Local bus ticket: \$3
- Cinema ticket: \$18
- Coffee: \$3-4
- Takeaway pizza: \$20
- Local train ticket: \$3
- Can of coke: \$3
- Sandwich: \$9
- Bike rental: \$30

## RESIDENCE: YMCA HOSTEL

ADDRESS:	Corner Pitt Street and Greys Avenue, Auckland, 1010
WEBSITE:	www.ymcauckland.org.nz
ACCOMMODATION TYPE:	Hostel, single room(s), twin room(s), double room(s), shared bathrooms with the halls/ hostel, 2 communal kitchens for the halls/ hostel, communal lounge/ common area, SKY TV
SERVICES AVAILABLE:	Laundry (extra charge), Wi-Fi (extra charge), phone (extra charge), linen and towels, cleaning service
EXTRA COST OF SERVICES:	Laundry: \$3 per token; Internet available from \$6 (24hr unlimited), \$20 (1wk unlimited), \$50 (20GB, valid for 30 days)
BEDROOM:	Mini fridge, desk, lamp, chair
KITCHEN:	Cooking utensils, pots & pans, crockery & cutlery, oven, stovetop
FACILITIES:	Gym (extra cost), canteen/ cafeteria/ restaurant, vending/ snack machine, coin-operated laundry facilities, pool table, table tennis, foosball table
EXTRA COST OF FACILITIES:	Gym prices vary – check with reception on arrival
FAMOUS LANDMARKS NEARBY:	Auckland Town Hall, Aotea Square, Central City Library, Auckland Art Gallery
VISITORS OR GUESTS ALLOWED?	Yes, but only until 18:00; visitors are not permitted to stay overnight
NOISE RESTRICTIONS?	Yes (From 22:00 every day)
SMOKING ALLOWED IN THE RESIDENCE?	No
24-HOUR SECURITY?	Yes
ROOM CLEANING:	Housekeeping vacuum and empty rubbish Monday-Thursday
LINEN CHANGING:	Once a week
AVAILABILITY:	Year-round
MINIMUM NUMBER OF WEEKS?	1 week
CHECK-IN AND CHECK-OUT TIMES:	Check-in: 14:00 / Check-out: 10:00
ROOM DEPOSIT?	Yes; Price: \$50 (for 1-3 weeks), \$150 ( for 4+ weeks) ; credit card information taken on arrival for key deposit



### Location and transport

	By foot	By bike	By bus	By subway/train
Time to the school (Auckland):	35 minutes	15 minutes	28 minutes	N/A
Time to the nearest café / restaurant:	5 minutes	1 minute	N/A	N/A
Time to the nearest supermarket:	10 minutes	4 minutes	N/A	N/A
Time to the nearest post office:	15 minutes	5 minutes	N/A	N/A
Time to the nearest ATM / bank:	10 minutes	5 minutes	N/A	N/A
Time to the nearest sports center:	5 minutes	2 minutes	N/A	N/A
Time to the nearest hospital:	N/A	N/A	N/A	N/A
Time to the city center:	13 minutes	6 minutes	25 minutes	N/A
Time to the main airport:	N/A	30 minutes	34 minutes	N/A

## RESIDENCE: CITY LODGE

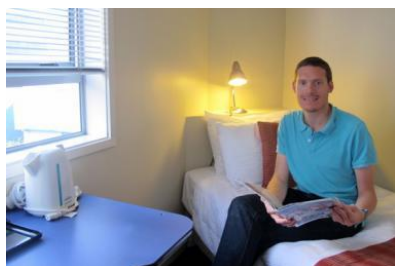
ADDRESS:	150 Vincent Street, Auckland, 1010
WEBSITE:	www.citylodge.co.nz
ACCOMMODATION TYPE:	Single room(s), double room(s), en-suite bathroom(s), shared kitchen, communal lounge/ common area, TV in the common area, SKY TV
SERVICES AVAILABLE:	Laundry (extra charge), Wi-Fi (extra charge), phone (extra charge), linen and towels, cleaning service
EXTRA COST OF SERVICES:	Laundry: coin-operated
BEDROOM:	TV, mini fridge, wardrobe/ closet, desk, lamp, chair
KITCHEN:	Cooking utensils, pots & pans, crockery & cutlery, stovetop, oven, fridge, freezer
FACILITIES:	Vending/ snack machine, outdoor space, coin-operated laundry facilities
EXTRA COST OF FACILITIES:	No
FAMOUS LANDMARKS NEARBY:	Sky Tower, Fitness Club, Karangahape Road, Auckland Art Gallery
VISITORS OR GUESTS ALLOWED?	Yes, but only until 18:00; visitors are not permitted to stay overnight
NOISE RESTRICTIONS?	Yes (From 22:00 every day)
SMOKING ALLOWED IN THE RESIDENCE?	No
24-HOUR SECURITY?	Yes
ROOM CLEANING:	Once a week
LINEN CHANGING:	Once a week
AVAILABILITY:	Year-round
MINIMUM NUMBER OF WEEKS?	1 week
CHECK-IN AND CHECK-OUT TIMES:	Check-in: 14:00 / Check-out: 10:30
ROOM DEPOSIT?	Yes; Price: \$70 (for less that 28 days), \$250 (for more than 28 nights)



### Location and transport

	By foot	By bike	By bus	By subway/train
Time to the school (Auckland):	37 minutes	15 minutes	30 minutes	N/A
Time to the nearest café / restaurant:	10 minutes	4 minutes	N/A	N/A
Time to the nearest supermarket:	10 minutes	4 minutes	N/A	N/A
Time to the nearest post office:	15 minutes	4 minutes	N/A	N/A
Time to the nearest ATM / bank:	10 minutes	4 minutes	N/A	N/A
Time to the nearest sports center:	10 minute	5 minutes	N/A	N/A
Time to the nearest hospital:	20 minutes	10 minutes	15 minutes	N/A
Time to the city center:	12 minutes	6 minutes	25 minutes	N/A
Time to the main airport:	N/A	N/A	40 minutes	N/A

## RESIDENCE: HOST FAMILY INFORMATION



THINGS STUDENTS NEED TO BRING:

Toiletries, personal items to make their room feel like home, prescription medication, a small gift for your host family (not required)

SERVICES INCLUDED:

Bed linen, towels, laundry once a week (free of charge), telephone use for emergencies

EXTRA COST OF SERVICES:

Internet charges are around \$10

MEALS PROVIDED:

Yes

- **BREAKFAST:** Breakfast is usually a light meal consisting of cereal, fruit, toast, juice, or coffee. Hosts will usually ask you to prepare your own breakfast.
- **LUNCH:** You will be responsible for buying your own lunch at school, from a local restaurant, or the local shops.
- **DINNER:** You will usually eat dinner with your host, or occasionally you may prepare your own meal with food supplied by your host.

WILL THE HOMESTAY ARRANGE TO PICK UP THE STUDENT FROM THE AIRPORT?

No

TRANSPORT TO SCHOOL:

Your host will help you to find your way to and from school on your first day and will show you how to use public transport.

WHERE ARE THE HOST FAMILIES LOCATED?

Remuera, Mount Eden, Hillsborough

ADDITIONAL INFORMATION:

Homestays are 45–60 minutes of commute time to the school