

CCEL

CHRISTCHURCH & AUCKLAND

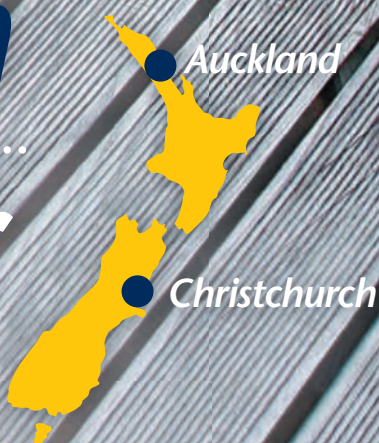
COLLEGE OF
ENGLISH

IN PARTNERSHIP WITH THE UNIVERSITY OF CANTERBURY



Enjoy learning
English

.....
Discover
New Zealand



Welcome to CCEL



Tertiary Partnerships

CCEL is the official English language provider for the University of Canterbury (UC) and the University of Canterbury International College (UCIC). It is the entry point for students who need to improve their English before they go on to further studies.



Two great locations

CCEL has two great locations. Students can choose to study in Christchurch on a modern university campus or in Auckland's vibrant city centre (or both). Students can change cities easily.



A range of courses

CCEL has a range of courses including General English (Day & Evening), Business English, Academic English, Cambridge Exam Preparation, IELTS Preparation and Teacher training. Changing course is easy.



Academic Recognition

Our English for Academic Purposes (EAP) courses are recognised by the University of Canterbury as proof of English proficiency. This enables students direct entry* (No IELTS required) to programmes at UC and UCIC.



Work & Study

CCEL is an NZQA Category 1 school. Students with a student visa** can work part time while studying if they are enrolled on a full time course of 14 weeks or longer.



A friendly, welcoming & supportive environment

CCEL is a very warm and welcoming school. Our supportive and experienced staff can help students with all of their learning needs and provide support for their everyday life in New Zealand.



Why study at CCEL?

CCEL is the University of Canterbury's English language provider, based on its campus in Christchurch and also in the Auckland City Centre. This gives students the choice of two great schools in two excellent locations. CCEL is an NZQA Category 1 school, as a result of our commitment to providing the highest possible level of academic quality and student support.

Study English at CCEL and enjoy:

- a university environment and the use of university facilities on the Christchurch campus
- a vibrant city atmosphere at the Auckland campus
- a direct pathway to UC and UCIC programmes
- the chance to work part-time if you study full time for 14 weeks or more**
- homestay or student residence accommodation
- studying with friends from more than 20 different countries
- free wireless internet access
- an online student visa application service
- small class sizes - a maximum of 14 students per class in Christchurch, and up to 10 students per class in Auckland

Partnerships, Accreditations & Associations:



*Entry without the need of an external English test. Students must also meet the academic requirements of their chosen course at UC or UCIC.

**Please check Immigration New Zealand's website www.immigration.govt.nz to learn the requirements and how to apply for a student visa.

CCEL Christchurch

Facilities

-  20 classrooms
-  Self-study centre
-  Free internet & wifi
-  Computer room / digital listening lab
-  University libraries
-  University cafeteria & student lounge
-  University sports facilities

CCEL Christchurch is on the University of Canterbury (UC) campus. At CCEL Christchurch you can enjoy a university environment and the use of UC facilities.



Christchurch Facts

Christchurch is New Zealand's second largest city with a population of about 350,000. Christchurch is between the spectacular Southern Alps and the beautiful Pacific Ocean and is the gateway to the South Island.

IN AND AROUND CHRISTCHURCH YOU CAN ENJOY:


-  Skiing
-  Golf
-  World class wineries
-  Beautiful parks and gardens
-  Whale watching
-  Mountain biking



Enjoy learning English Discover New Zealand

CCEL Auckland

Facilities

-  12 classrooms
-  Self-study centre
-  Computer room with free internet & Wifi
-  Internet-enabled TVs in classrooms
-  Student kitchen and lounge
-  Smaller class sizes (up to 10 students per class)
-  Modern environment

CCEL Auckland is located in the city centre and is surrounded by restaurants, movie theatres and great shopping. At CCEL Auckland you can enjoy studying in a vibrant city atmosphere.



Auckland Facts

Auckland is New Zealand's largest city with a population of over 1 million. Built between 2 harbours, Auckland is a city known for cultural diversity, exciting nightlife and beautiful scenery.

IN AND AROUND AUCKLAND YOU CAN ENJOY:

-  World class dining
-  Shopping
-  Fishing
-  Sailing
-  Cultural activities
-  Nightlife



Image courtesy of Education New Zealand

Courses

Students from around the world have been learning English at CCEL since 1991. CCEL courses are approved by the New Zealand Qualifications Authority (NZQA) and CCEL has the highest possible NZQA quality rating.



English for Life

General English (GE)

CCEL's General English courses are for people who want to improve their all-round English skills and learn how to communicate effectively. CCEL offers GE at 6 levels from beginner to advanced. GE courses include, speaking, listening, reading and writing lessons and vocabulary and grammar development. Courses are intensive, have regular testing and a focus on student progress.

General English Evening

General English Evening courses are available at intermediate level and above and follow a similar course structure to the General English day course. Students often choose to study General English in the evenings if they want to have more free time, or decide to work part time, during the day (depending on their visa conditions).

Business English

CCEL's Business English courses are for students planning to use English in their careers. As well as developing students' English skills overall, CCEL's Business English courses introduce business language, concepts and skills, including making presentations, negotiating, participating in meetings and business writing.

CCEL offers add-on programmes so students can make the most of their New Zealand experience.



Job Search Programme



Au Pair Work Placement Programme



Early Childhood Placement Programme

*Images courtesy of Education New Zealand



Academic English

EAP 1 & EAP 2

CCEL's EAP courses are not only for students who wish to study at UC or UCIC, but also for students who want to study at any tertiary institution in an English-speaking country. The courses are offered at 2 levels and focus on Academic English skills.



Exam Preparation

Cambridge Exam Preparation

Students can gain internationally recognised General English qualifications by taking Cambridge Exam Preparation courses at CCEL. CCEL offers Cambridge courses at 3 levels from low intermediate (A2 +) to advanced (C1). Cambridge courses help to develop and strengthen all aspects of students' knowledge and use of English, as well as their exam skills.

IELTS Preparation

Students can prepare for internationally recognised Academic English qualifications by taking IELTS Exam Preparation courses at CCEL. IELTS courses help to develop and strengthen students' knowledge and use of academic English, as well as improving their exam skills.



Teacher Training

TESOL/Cambridge TKT

CCEL's TESOL/Cambridge TKT course is perfect for non-native English speakers who want to teach English with confidence, improve their job opportunities, and gain a teaching qualification from Cambridge English Language Assessment. The course includes teaching theory, teaching practice and observations of CCEL classes.

CELTA

The CELTA (Cambridge Certificate in English Language Teaching to Adults) is a highly-regarded internationally recognised qualification awarded by Cambridge ESOL. It is for native or near native (equivalent to IELTS 7.5 or above) English speakers who have little or no previous English language teaching experience. It is also ideal for more experienced teachers without an equivalent qualification.

Pathways

CCEL - UC's & UCIC's pathway partner

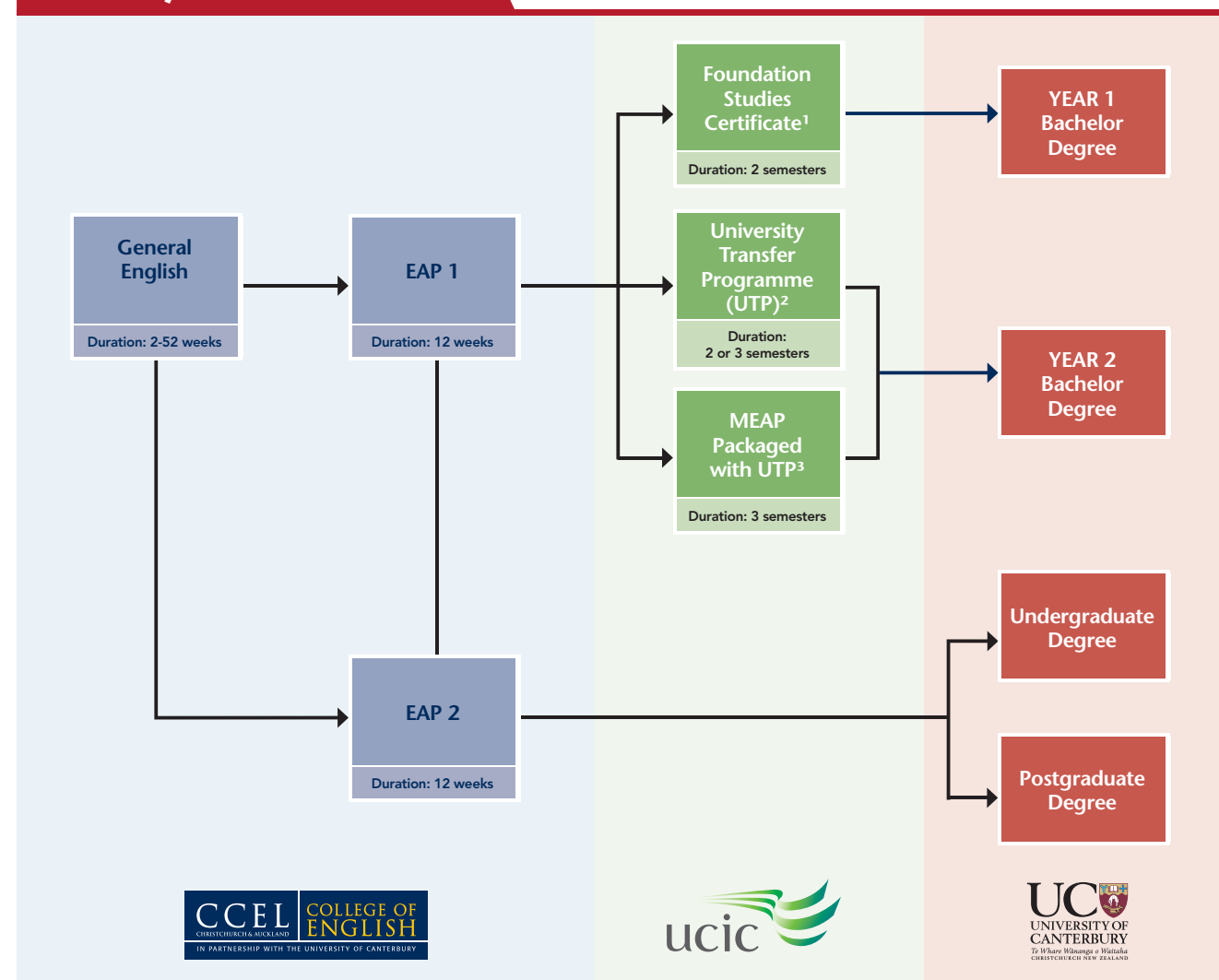
CCEL is the UC's and UCIC's English language provider. Students who successfully complete an English for Academic Purposes course at CCEL and meet the academic entry requirements can transfer to their chosen tertiary programme without taking IELTS.



About the University of Canterbury (UC)

- Ranked in the top 3% of universities in the world
- 1st university in NZ with a 5 star QS rating
- QS World's elite (Top 200) universities in 2013 for 19 subject areas
- Ranked 19th in world for Civil and Construction Engineering
- Top 100 in Law QS ranking

Pathways to UC & UCIC



¹ Foundation Studies Certificate pathways successful students to Year 1 of their degree at UC or to UTP.

² UTP is equivalent to Year 1 of the relevant degree from UC. Successful students then pathway to Year 2.

³ Mixed English Academic Programme (MEAP) consists of combined English and academic studies and can be completed in three or four academic semesters (12-15 months).



About UC International College (UCIC)

Located right on the UC Campus, UCIC provides students an exclusive and direct pathway to the University of Canterbury. This innovative, one of a kind pathway in New Zealand, offers a supportive learning environment for a seamless transition to second year in the mainstream university environment.

Entry requirements

CCEL Course	Entry Requirements (One of the following)	Pass Marks	Exit to
EAP 1	Pass grade in the CCEL EAP1 entry test*	Grade C on EAP1 assessment (approximately equivalent to IELTS 5.0)	Mixed English Academic Programme (MEAP)
	IELTS 4.5	Grade C+ on EAP1 assessment (approximately equivalent to IELTS 5.5)	University Transfer Programme (UTP)
	Cambridge PET pass		Foundation Studies Certificate
	TOEFL 32		CCEL EAP 2
EAP 2	Pass grade in the CCEL EAP2 entry test*	Grade C+ on EAP2 assessment (approximately equivalent to IELTS 6.0)	UC Undergraduate Programmes
	C+ pass in EAP1		
	IELTS 5.5		
	Cambridge FCE pass	Grade B+ on EAP2 assessment (approximately equivalent to IELTS 6.5)	UC Postgraduate Programmes
	TOEFL 46		
	Pass grade in the CCEL EAP2 entry test*		
	B pass in EAP1		
	IELTS 6.0		
	Cambridge FCE pass		
	TOEFL 60		

*can be taken prior to arrival

How EAP Assessment Works

Students are assessed on a weekly basis through different methods.

- Tests: all skills, grammar and lexis
- Oral presentations
- Assessed on-line component
- Short assessed writing
- Extended writing assessments
- Presentation of portfolio



Living

All CCEL student accommodation is carefully selected and monitored by CCEL staff. CCEL can arrange for students to live in a homestay with a New Zealand family or with other students in a student residence.



**Christchurch
& Auckland**

Homestay

Staying in a CCEL homestay is perfect for students who want to experience the New Zealand lifestyle and get extra support from their host family.

IF STUDENTS CHOOSE TO LIVE IN A HOMESTAY THEY WILL:

- have their own room with a desk for studying
- share the rest of the house with their host family
- have breakfast and dinner provided every day plus lunch at the weekend and on public holidays
- be able to practise their English with their family every day

Image courtesy of Education New Zealand



Image courtesy of Education New Zealand



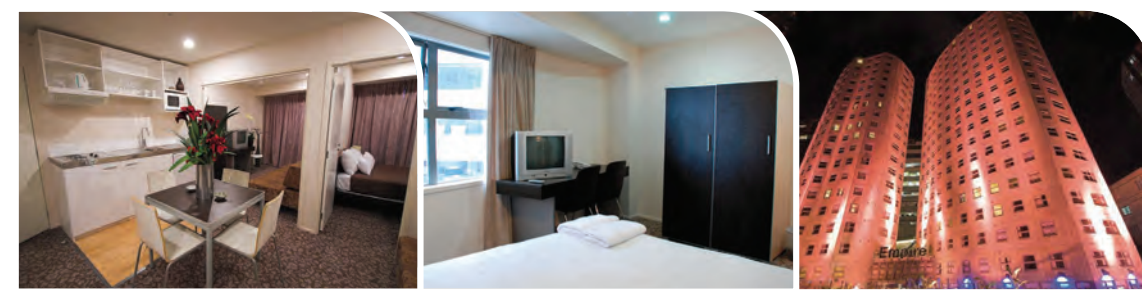
Christchurch

University Student Residence

The university student residence is for those students who want to share an apartment with other students in Christchurch.

If students choose to live in the university residence they will:

- have their own room with a desk for studying
- share the rest of the apartment with up to 5 other students
- have kitchen facilities where they can prepare their own meals
- live on the university campus (within walking distance of CCEL)



Auckland

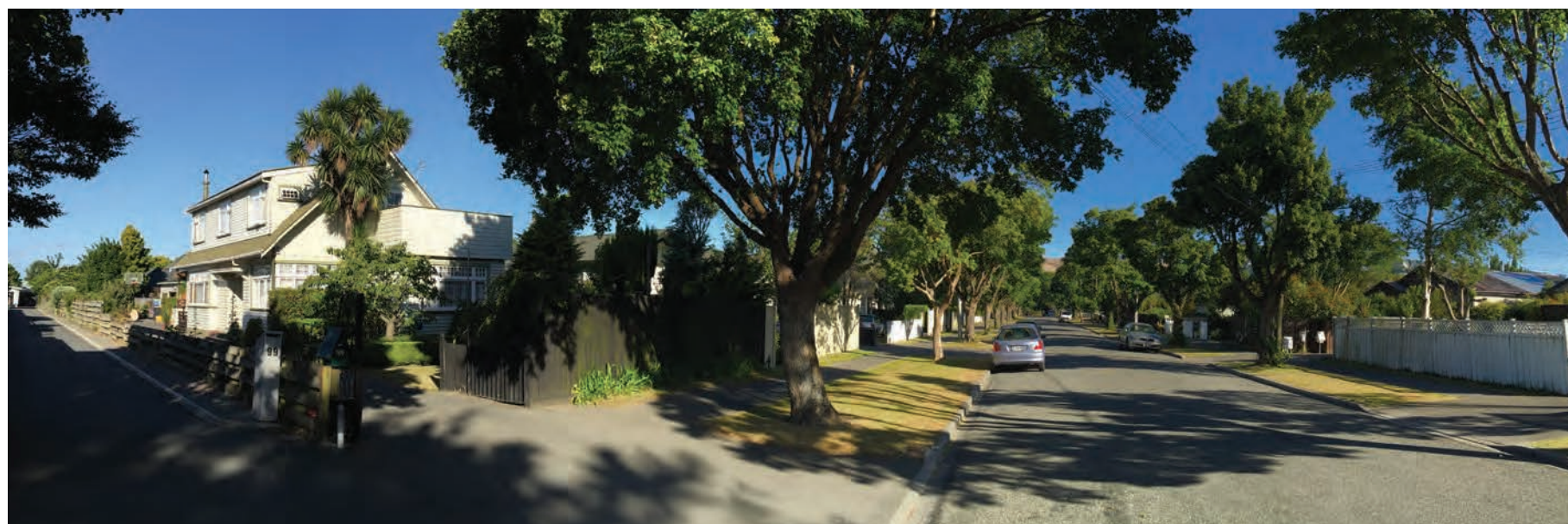
Empire Apartments

The Empire student residence is for those students who want to share an apartment with other students* in Auckland.

If students choose to live in the Empire Apartments they will:

- have their own room with a desk for studying
- share the rest of the apartment with up to 2 other students
- have kitchen facilities where they can prepare their own meals
- live in the Auckland CBD (within walking distance of CCEL)

**Private studio option also available*





WHY WE LOVE CCEL ACTIVITIES

.....
"One of the things that I most enjoy at CCEL is sharing some of the weekly activities with a teacher. For example, sometimes we go for dinner together. We chat and share funny stories. This creates a better relationship and is a nice informal way to get to know each other."
 Lina (Colombia)



.....
"I found a dental assistant job. Thank you for always helping me at the job-search workshops! I'm grateful to all of the CCEL people."
 Aya (Japan)

.....
"I enjoyed the Maori cultural classes because it was fun to sing and dance and it was special to learn about another culture."
 Pin-Hua (Taiwan)



Shared experiences

CCEL's activity programmes provide the perfect way to make friends and have fun.

Image courtesy of Education New Zealand

WEEKDAY ACTIVITIES AND WEEKEND TOURS INCLUDE:

- *Bungy jumping*
- *Whale watching*
- *Wine tours*
- *Sport*
- *Conversation club*
- *Surfing*
- *Cooking classes*
- *Job search workshops*
- *Sky Tower visit*
- *Museum visits*



CCEL

CHRISTCHURCH & AUCKLAND

COLLEGE OF ENGLISH

IN PARTNERSHIP WITH THE UNIVERSITY OF CANTERBURY

CCEL Christchurch

University of Canterbury Campus
Solway Avenue, Ilam, Christchurch
PO Box 31212, Christchurch 8444,
New Zealand

Ph: +64 3 343 3790

Fax: +64 3 343 3791

Email: study@ccel.co.nz

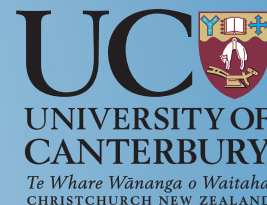
CCEL Auckland

Level 7, 155 Queen Street
Auckland
PO Box 7206, Auckland 1141,
New Zealand

Ph: +64 9 379 8710

Fax: +64 9 379 8713

Email: study@ccel.co.nz



www.ccel.co.nz



ENGLISH NEW ZEALAND™

incorporating FIELSNZ

THE ULTIMATE LEARNING EXPERIENCE

CODE OF PRACTICE

CCEL has agreed to observe and be bound by the Code of Practice for the Pastoral Care of International Students. Copies of the Code are available on request from CCEL or from the New Zealand Ministry of Education website at www.minedu.govt.nz/international

IMMIGRATION

Full details of immigration requirements, advice on rights to employment in New Zealand while studying, and reporting requirements are available from Immigration New Zealand, and can be viewed on their website at www.immigration.govt.nz

ELIGIBILITY FOR HEALTH SERVICES

Most international students are not entitled to publicly funded health services while in New Zealand. If you receive medical treatment

during your visit, you may be liable for the full costs of that treatment. Full details on entitlements to publicly-funded health services are available through the Ministry of Health, and can be viewed on their website at www.moh.govt.nz

ACCIDENT INSURANCE

The Accident Compensation Corporation provides accident insurance for all New Zealand citizens, residents and temporary visitors to New Zealand, but you may still be liable for all other medical and related costs. Further information can be viewed on the ACC website at www.acc.co.nz

MEDICAL AND TRAVEL INSURANCE

International students (including group students) must have appropriate and current medical and travel insurance while in New Zealand.

HOLIDAYS

CCEL is closed on weekends and public holidays. Please see the Enrolment Guide for the dates of New Zealand public holidays.

HOW TO ENROL

CCEL has partner consultants all over the world. Our consultants can help you choose the best course, and can also help you with visa applications and travel arrangements.

Please contact us to check the location of your nearest partner consultant.

It is also possible to enrol directly with CCEL. Please complete the enrolment form in this brochure or enrol online via our website www.ccel.co.nz

ENJOY LEARNING ENGLISH

We look forward to welcoming you to CCEL. We are sure you will enjoy your learning experience.