

Ara Ako, Ara Mahi
**Study &
Career Guide**
2019/2020



Heperi
Te Tumu Whakahaere o Te Puna Wānaka
Manager of Te Puna Wānaka



Kia ora & welcome

At Ara, your success is our priority. We're committed to ensuring that your learning experience is a positive one and that you graduate work-ready with all the skills, knowledge and experience you need to enjoy a successful career, anywhere.

To achieve this we provide plenty of one-on-one time with your tutors and frequent opportunities to work collaboratively with your classmates. We regularly fine tune our programmes

on the advice of our industry partners to ensure you're getting the most up-to-date, industry-relevant skills. And, wherever possible, we get you off campus to learn in real workplaces. Where that's not possible, you'll learn in environments that closely resemble the real thing.

Throughout your time at Ara you'll be encouraged and supported by staff and tutors who are committed to your wellbeing and success. You'll

have access to impressive facilities and comprehensive student services, and you'll have unlimited opportunities to participate in student life and make lasting friendships with students and tutors from around the world.

Whatever path you wish to pursue, we'll pull out all the stops to help you achieve your goal. We look forward to welcoming you into our friendly and vibrant community soon.

Please note: Every attempt is made to ensure this brochure is correct at time of printing however, information is subject to change. Ara reserves the right to amend or withdraw courses.

Anei ngā take Why study at Ara?

You can study where you like

You can choose to study at our campuses in Christchurch, Ashburton, Timaru or Oamaru, or online.

You'll learn from experts

Our tutors come from industry; they have years of real-world experience and contacts to share with you.

You'll be treated as an individual

You'll never just be a number or a face in the crowd. You'll get to know your tutors and they'll get to know you (and your needs).

You'll be supported all the way

Whether you have academic or personal challenges affecting your study, or you need accommodation, transport, childcare, healthcare, disability support or career guidance, we have the staff and services to help.

You'll be part of something special

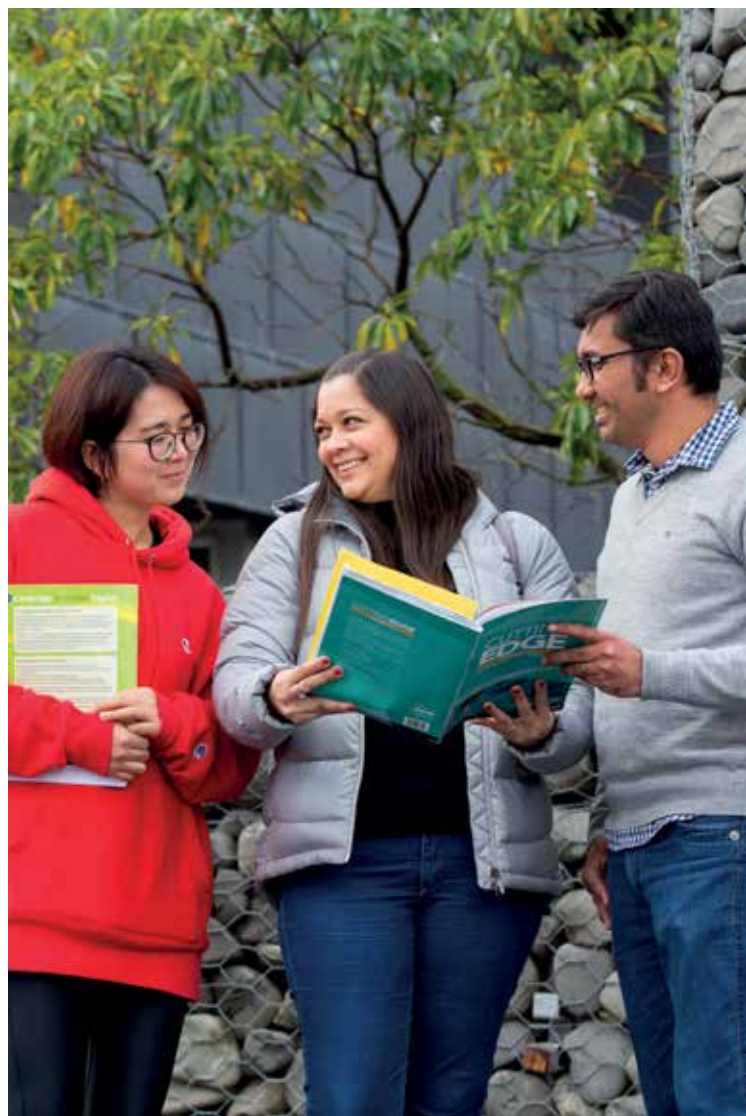
At Ara you'll enjoy a strong sense of belonging within an inclusive, multicultural environment.

You'll become work-ready

We'll teach you the skills employers want and give you work placement opportunities that prepare you for the realities of the job.

You can really go places

With an internationally recognised Ara qualification, the world is your oyster.



Helpful tip

This guide is exactly that - just a guide. Our website is where you'll find the most up-to-date and comprehensive information on all study options at Ara, including full details of each programme plus any new programmes that have been added since this brochure was produced. If you can't find what you're looking for, call us and one of our friendly staff will be happy to help.

ara.ac.nz | 0800 24 24 76

Contents

- 5 **So many ways to study at Ara**
 - Vocational, industry-relevant programmes
 - Experience Ara
 - Dual Enrolment
 - Community Study
 - Adult Literacy
 - Foundation Studies
 - Next Step Centre for Women
 - He Toki
 - Pasifika Trades Training
 - Youth Guarantee
 - Professional development in the workplace
 - Assessment of prior learning
 - Short courses
- 8 **So, what would you like to study?**
- 10 **Arts & Media**
 - Art and Design
 - Broadcasting and Media
 - Performing Arts / Music Arts
- 13 **Business**
- 14 **Computing**
- 16 **Engineering & Architecture**
 - Engineering
 - Architectural Studies
- 18 **Health**
 - Health Sector
 - Human Services
 - Sport, Nutrition and Health Promotion
- 20 **Hospitality & Service Industries**
 - Cookery, Hospitality, Travel and Tourism
 - Hair and Beauty
- 22 **Language, Culture & Education**
 - Early Childhood Education
 - English Language
 - Japanese Language
 - Māori/Pasifika Language and Culture
 - Workskills
 - Teacher Education
 - Sustainability and Outdoor Education
- 27 **Science, Agriculture & Animal Science**
 - Science
 - Agribusiness
 - Animal Science
- 31 **Trades**
 - Automotive Trades
 - Engineering Trades
 - Construction
 - Electrical
 - Joinery
 - Painting and Decorating
 - Plumbing, Gasfitting and Drainlaying
 - Commercial Road Transport
- 34 **Additional information**
 - Levels of study at Ara
 - Key information
 - Student exchange
 - Visit us at our Community Study locations

Fees-free study is here

The government's fees-free study scheme (introduced in 2018) is a great opportunity to reduce the cost of gaining a qualification. Providing you haven't already studied at tertiary level for more than six months, and you meet the eligibility criteria, your first year of study is fees-free.

For further information and to check your eligibility, visit feesfree.govt.nz.

Ara rau, taumata rau

So many ways to study at Ara

At Ara, our focus is on flexible, accessible study options. That's why we've created a range of pathways and methods for you to gain qualifications and advance your training - whether you're a school leaver or you're looking to upskill or change career. We have full-time, part-time and online options, all levels of study (from foundation courses right through to Masters qualifications), professional development opportunities and much more. Here's a brief overview of some of these options.



Vocational, industry-relevant programmes

All 200+ programmes at Ara are designed with input from industry to ensure you have the skills and knowledge employers want, and that you're work-ready by the time you graduate. Each programme is highly practical and most include work-integrated learning such as work placements, internships and industry projects. All are taught by tutors with extensive real-world experience.

Experience Ara

Experience Ara provides a range of opportunities to give you a taste of tertiary study at Ara, such as open days, information sessions and campus tours, plus taster days, STAR courses and holiday programmes for school students. For full details search "Experience Ara" on our website.

Dual Enrolment DE

If you're still at school, you can earn NCEA credits at Ara at the same time. With a Dual Enrolment programme you're enrolled at both school and Ara. In most cases you'll spend three days a week at school and two days a week at Ara, earning credits in a subject of your choice. Dual Enrolment programmes are listed in the subject pages of this guide - look out for the DE symbol. You can also email us engagement@ara.ac.nz.

Community Study

At our community-based learning centres we offer a range of courses you can study at your own pace. These include free courses in computing, job hunting and CV writing, plus affordably priced business courses like MYOB. There are Ara community learning centres in Bishopdale, Hornby, New Brighton, Rangiora, Christchurch city, Ashburton, Timaru and Oamaru (see page 35 for location details).



Adult Literacy

If you'd like to improve your reading, writing and spelling skills for work or everyday life, we have free adult literacy classes available during the day and evening. You'll learn from friendly tutors in a supportive environment. To be eligible, you must be a fluent speaker of English.

Foundation Studies

Our foundation programmes are stepping stones to further study or a new career. You can gain an entry-level qualification for more advanced study, or gain useful skills for employment.

Next Step Centre for Women

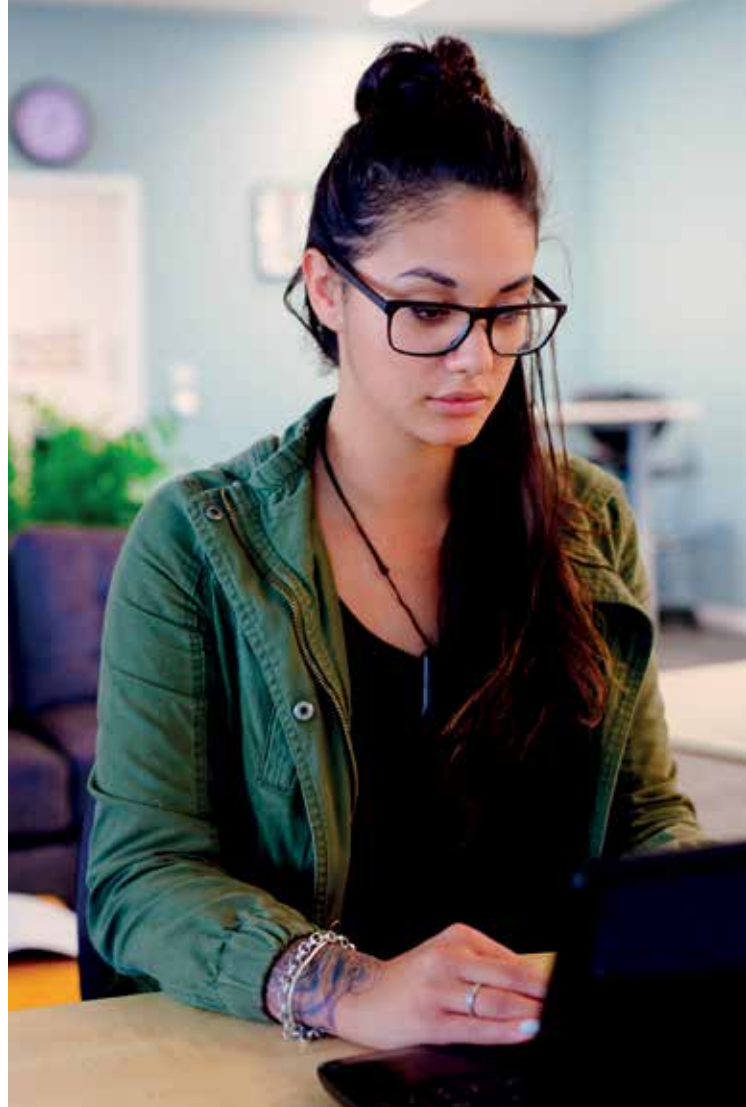
Needing some direction and confidence? You'll find it at our Next Step Centre for Women. Get to know yourself better, explore your options, update your skills and develop your self-confidence and self-esteem.

He Toki HT

If you're Māori and aged between 16 and 40, a He Toki course provides the opportunity to gain skills for employment for free while exploring Te Reo Māori, whakapapa and haka. Along the way you'll be supported by dedicated Māori student advisors. He Toki programmes are listed in the subject pages of this guide – look out for the HT symbol.

Pasifika Trades Training PT

Pasifika Trades Training offers a range of free trades-based programmes for Pasifika students aged between 16 and 40. The scheme is run jointly with leaders from the Pasifika community and government agencies. Pasifika church ministers also play a key role in offering you support, alongside Ara's dedicated Pasifika student advisors. Pasifika Trades Training programmes are listed in the subject pages of this guide – look out for the PT symbol.





Youth Guarantee

Youth Guarantee programmes are the smart way to get ahead if you're 16 to 19 years old and not at school or working. These free programmes set you up with great foundation skills for employment or further study, and enable you to make confident decisions about your future. As a Youth Guarantee student you'll receive transport support, extra pastoral care and guidance as you transition into work or further tertiary study. Another great thing about studying a Youth Guarantee programme: in most cases you'll still be able to take advantage of the government's first year fees-free offer to study at a higher level later. Look out for the YG symbol in subject pages of this guide to see what's available.

Professional development in the workplace

We offer a range of solutions to help businesses, organisations, teams and individuals to develop their workplace skills. These solutions include tailored workshops, courses and qualifications (up to degree level), managed apprenticeships and work experience opportunities. To arrange a more in-depth discussion so we can assess your needs, email engagement@ara.ac.nz.

Assessment of prior learning

If you've got extensive work experience but no qualification, the Centre for Assessment of Prior Learning at Ara may be able to help you get the recognition you deserve for your skills and expertise. Through CAPL, your experience could translate into part or all of a career-enhancing qualification. See our website for details or email capl@ara.ac.nz.

Short courses

Short courses (day, evening, weekend and online) are available at Ara in a variety of subjects. To view the options, search 'short courses' at ara.ac.nz.



No matter where you're at now, or what you want to achieve, chances are we have a career-enhancing option to suit your needs!

He aha tōu ara? So, what would you like to study?

Explore your study options by identifying the areas that best match your interests.

You're a creative thinker with the ability to innovate, engage and inspire.

Check out our programmes in:

- Art & Design - page 10
- Business - page 13
- Broadcasting and Media - page 10
- Computing - page 14
- Performing Arts / Music Arts - page 11



You like to be at the cutting edge of technology and you work well with systems.

Check out our programmes in:

- Computing - page 14
- Engineering - page 16
- Laboratory Science - page 27



You're interested in exploring languages and cultures for your own and others' personal development.

Check out our programmes in:

- Early Childhood Education - page 22
- English Language - page 22
- Japanese Language - page 24
- Māori Language and Culture - page 24
- Pasifika Language and Culture - page 24
- Sustainability and Outdoor Education - page 25
- Teacher Education - page 25



You're interested in understanding how things work, solving problems and nurturing plants and animals.

Check out our programmes in:

- Agribusiness - page 28
- Animal Science - page 28
- Laboratory Science - page 27



You're interested in the health and wellbeing of others and you're empathetic by nature.

Check out our programmes in:

- Animal Science - page 28
- Human Services - page 19
- Medical Imaging - page 18
- Midwifery - page 18
- Nursing - page 18
- Osteopathy - page 18
- Sport, Nutrition and Health Promotion - page 19



You're customer-focused with a desire to deliver great products, services and experiences.

Check out our programmes in:

- Business - page 13
- Cookery and Bakery - page 20
- Hair and Beauty - page 21
- Hospitality - page 20
- Travel and Tourism - page 20



You're highly motivated and organised, and you have a strong analytical ability.

Check out our programmes in:

- Business - page 13
- Computing - page 14



You're interested in solving problems in practical ways and changing the way we live.

Check out our programmes in:

- Architectural Studies - page 17
- Business - page 13
- Engineering - page 16
- Laboratory Science - page 27
- Sport, Nutrition and Health Promotion - page 19



You're very practical, you enjoy hands-on work and you can solve problems in a logical way.

Check out our programmes in:

- Engineering - page 16
- Laboratory Science - page 27
- Commercial Road Transport - page 33
- Trades - pages 31 to 33



Ara Toi & Ara Pāpāho Arts & Media

Art & Design

Our art and design programmes are highly practical and focus on skills-based learning to give you all the skills you need to be creative and effective in this competitive industry. You'll learn from expert tutors in small classes, in our well-equipped studios and Mac computers suites. You'll also have access to the latest tools, technology and industry experts to aid your creativity.



Qualifications	Level	Full-time	Part-time	Applications due	Start date
New Zealand Certificate in Creativity	4	6 months	✓	All year	Feb/July
New Zealand Certificate in Digital Media and Design	4	6 months	✓	All year	July
New Zealand Certificate in Fashion	4	6 months	-	All year	Feb/July
New Zealand Diploma in Arts and Design	5	1 year	✓	All year	February
New Zealand Diploma in Digital Media and Design	5	1 year	✓	All year	February
Bachelor of Design (Applied Visual Art)	7	3 years	-	All year	February
Bachelor of Design (Fashion Technology and Design)	7	3 years	-	All year	February
Bachelor of Design (Motion Design)	7	3 years	-	All year	February
Bachelor of Design (Photography)	7	3 years	-	All year	February
Bachelor of Design (Visual Communication Design)	7	3 years	-	All year	February
Graduate Certificate in Information Design	7	6 months	✓	All year	Feb/July
Graduate Diploma in Information Design and Management	7	6 months	✓	All year	Feb/July

Recommended subjects: maths, art, design, ICT, technology, graphics, English-rich subjects or relevant industry experience.

Potential careers: Advertising creative, content editor, fashion buyer, videographer, fashion designer, illustrator, film or TV animator, graphic designer, information designer, jeweller, model-maker, merchandiser, web designer, concept artist, patternmaker, printmaker, product rep, photographer.

Broadcasting & Media

The New Zealand Broadcasting School at Ara is recognised as one of the best places to train for a career in this highly competitive industry. Tutored by broadcasting professionals within state-of-the-art facilities, our graduates are highly sought after, both here and overseas.

Qualifications	Level	Full-time	Part-time	Applications due	Start date
New Zealand Certificate in Communications Media	4	6 months	-	All year	Feb/July
Bachelor of Broadcasting Communications (Journalism)	7	Up to 3 yrs	-	30 September	February
Bachelor of Broadcasting Communications (Screen and Television Production)	7	Up to 3 yrs	-	30 September	February
Bachelor of Broadcasting Communications (Radio)	7	Up to 3 yrs	-	30 September	February

Recommended for entry: Relevant university-approved subjects including subjects containing literacy standards at Level 3, or relevant industry experience.

Potential careers: Journalist, camera operator, radio presenter, online editor, production manager, copy writer, video editor, studio engineer, show producer, media promotions manager, videographer, sports reporter/producer.

Performing Arts / Music Arts

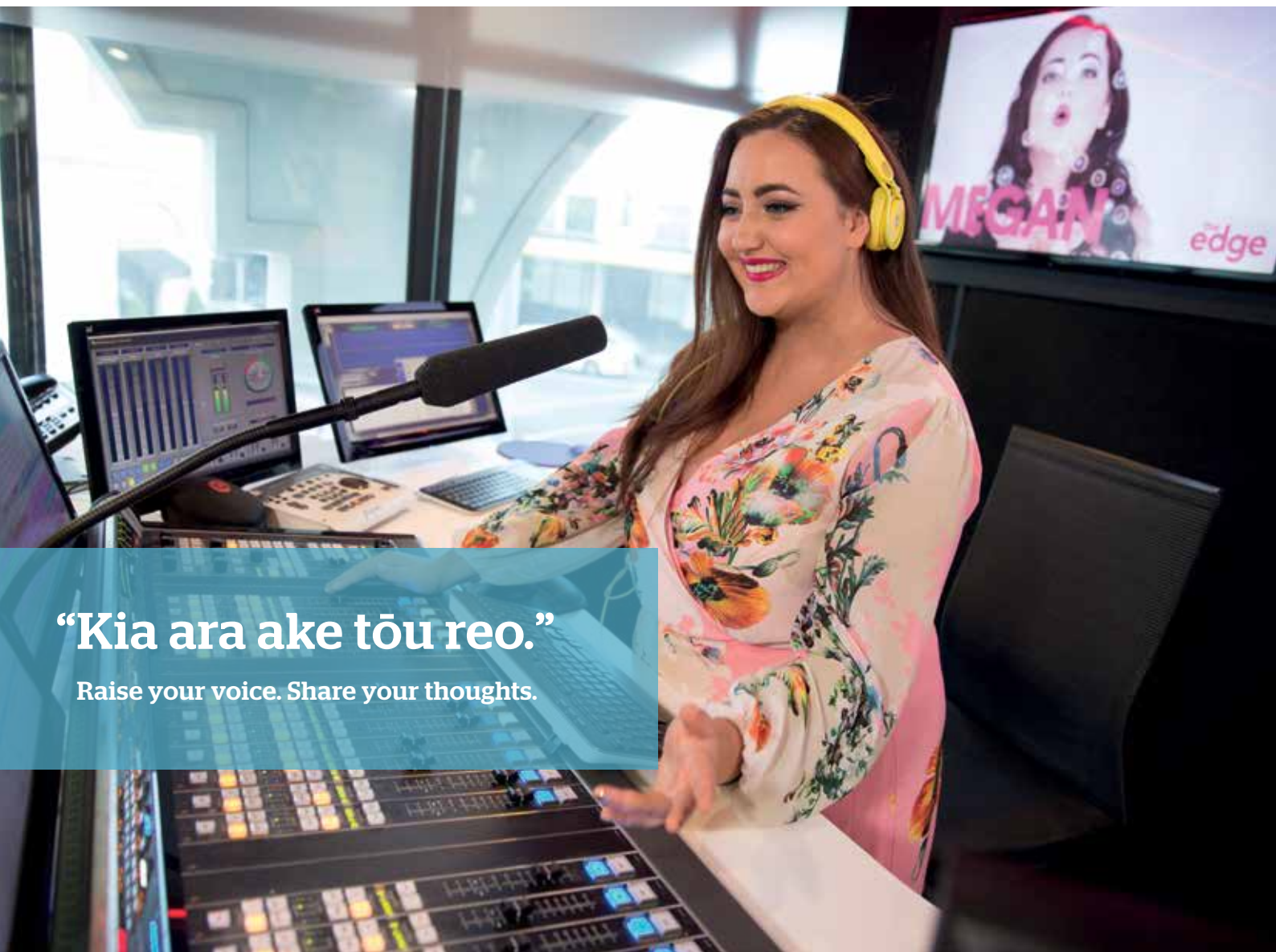
If you dream of a life as an actor or musician, give yourself the best start possible with one of our highly regarded performing arts programmes. As a music arts student you'll join a collaborative and supportive community of musicians who will feed your creativity and help you hone your musical skills. If theatre is your passion, a programme at our National Academy of Singing and Dramatic Art (NASDA) will provide you with a solid foundation of professional performance skills and a multitude of opportunities to showcase your talents in the wider community.



Qualifications	Level	Full-time	Part-time	Applications due	Start date
New Zealand Certificate in Music	4	1 year	-	All year	February
Bachelor of Music Arts	7	3 years	✓	All year	February
Bachelor of Performing Arts (with optional specialisation in Music Theatre)	7	3 years	-	Early Sep	February

Recommended for entry: Relevant university-approved subjects including subjects containing literacy standards at Level 3, or relevant industry experience.

Potential careers: Actor, arranger/composer, dancer, director/producer, musical director, musician, presenter, production manager, singer, songwriter, teacher.



“Kia ara ake tōu reo.”

Raise your voice. Share your thoughts.



Anita Dazzi
Business graduate (Applied Management)

**“The quality of the
tutors was amazing.”**

Ara Pakihi Business

The business world can lead in you in many directions. Our flexible programmes are designed to help you to take advantage of the scope that this dynamic sector provides, and enable you to go as far as you wish to go. You'll learn from tutors with real-world business experience, as well as representatives from highly regarded companies with knowledge and experience to share, in and beyond the classroom. Our extensive industry connections also mean we can provide many opportunities for work-integrated learning, internships and industry projects.



Qualifications	Level	Full-time	Part-time	Applications due	Start date
Introduction to Retail, Business Administration and Technology DE	2	-	1 day p/w	All year	July
New Zealand Certificate in Foundation Skills (Retail) DE	2	-	2 days p/w	All year	February
New Zealand Certificate in Foundation Skills (Retail) YG	2	6 months	-	All year	February
New Zealand Certificate in Business (Administration and Technology) DE	3	-	2 days p/w	All year	February
New Zealand Certificate in Business* (Administration and Technology)	3	6 months	-	All year	Feb/July
New Zealand Certificate in Business* (Introduction to Small Business)	3	6 months	✓	All year	All year
New Zealand Certificate in Business* (Introduction to Team Leadership)	3	6 months	✓	All year	All year
New Zealand Certificate in Retail*	3	6 months	✓	All year	July
New Zealand Certificate in Retail*	4	6 months	✓	All year	All year
New Zealand Certificate in Business* (Administration and Technology)	4	17 weeks	✓	All year	July
New Zealand Certificate in Business* (Introduction to Small Business)	4	6 months	✓	All year	All year
New Zealand Certificate in Business* (First Line Management)	4	Flexible	✓	All year	All year
New Zealand Certificate in Project Management*	4	Flexible	✓	All year	All year
New Zealand Certificate in Study and Career Preparation	4	6 months	✓	All year	Feb/July
New Zealand Diploma in Business* (with 6 strands)	5	1 year	✓	All year	Feb/July
Bachelor of Applied Management* (11 specialisations)**	7	3 years	✓	All year	Feb/July
Graduate Diploma* (12 specialisations)	7	1 year	✓	All year	Feb/July
Postgraduate Certificate in Professional Supervision	8	6 months	✓	All year	Various
Master of Sustainable Practice	9	1.5 years	✓	All year	Feb/July

*Online and/or blended study options available. Please note some programmes are available online only. Please visit ara.ac.nz for more details.

**Double specialisations available - visit www.ara.ac.nz for full details of all specialisations.

Recommended subjects: English-rich subjects, maths, ICT or relevant industry experience.

Potential careers: Accountant, business owner, event manager, executive assistant, financial advisor, hotel manager, HR manager, marketing executive, office administrator, operations manager, project coordinator/manager, restaurant manager, retail assistant/manager, sales representative.

Ara Rorohiko Computing

The ever-changing and exciting global IT industry is always looking to employ people with the ability to use technology to innovate and solve problems. We offer pathways in computing from Level 2 right through to Level 7 degrees and graduate diplomas. You can cross-credit between programmes and you can specialise in a particular area of computing. We place a strong emphasis on developing your practical abilities and - depending on the level of your study - you'll have the opportunity to acquire real-world experience through a significant industry-based project or internship.



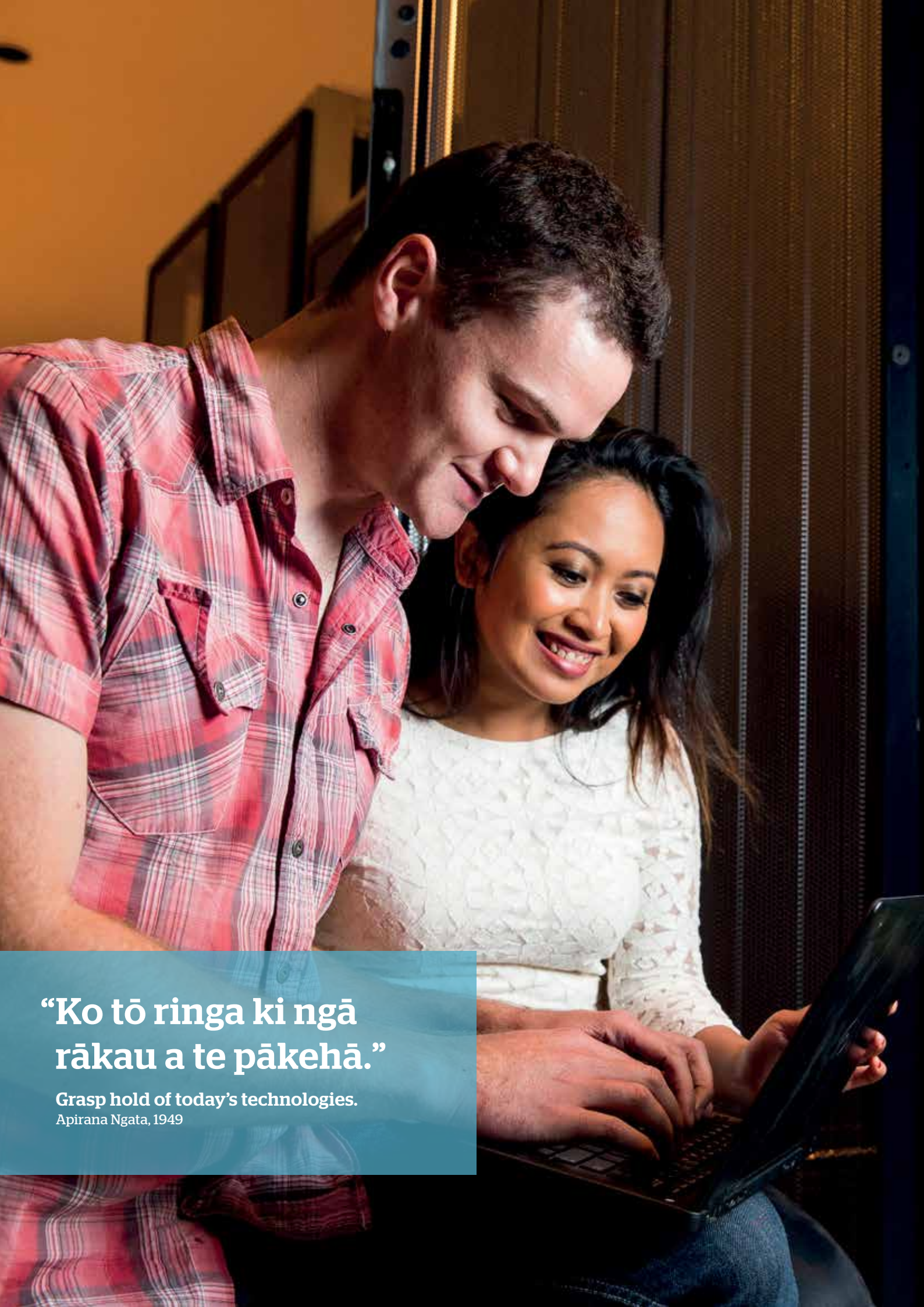
Qualifications	Level	Full-time	Part-time	Applications due	Start date
Digital Technologies DE	2	-	1 day p/w	All year	February
Digital Technologies DE	3	-	2 half days p/w	All year	February
New Zealand Certificate in Foundation Studies (Computing Skills) YG	2	6 months	-	All year	Feb/July
New Zealand Certificate in Computing (Intermediate User)	3	Flexible	✓	All year	Various
New Zealand Certificate in Study and Career Preparation	4	6 months	✓	All year	Feb/July
New Zealand Certificate in Computing (Advanced User)	4	Flexible	✓	All year	Various
New Zealand Certificate in Information Technology Essentials PT HT	4	6 months	✓	All year	Feb/July
New Zealand Diploma in Information Technology Technical Support	5	1 year	✓	All year	Feb/July
New Zealand Diploma in Web Development and Design	5	1 yrar	✓	All year	Feb/July
New Zealand Diploma in Networking	6	1 year	✓	All year	Feb/July
New Zealand Diploma in Systems Administration	6	1 year	✓	All year	Feb/July
Bachelor of Information and Communication Technologies	7	3 years	✓	All year	Feb/July
Graduate Diploma in Information and Communication Technologies	7	1 year*	✓	All year	Feb/July

*For some students an 18 month study period may be more appropriate.

Recommended subjects: ICT, digital technologies, maths or maths-rich subjects, English or English-rich subjects.

Relevant industry experience also considered.

Potential careers: Business analyst, computer programmer, database administrator/developer, interactive media developer, IT support/helpdesk, network infrastructure technician, network systems/server administrator, software engineer, software tester, web developer, app developer.



“Ko tō ringa ki ngā
rākau a te pākehā.”

Grasp hold of today's technologies.
Apirana Ngata, 1949

Ara Pūhanga & Hoahoanga Engineering & Architecture

Engineering

Engineering involves solving problems and challenges through the application of scientific knowledge. It's a hugely diverse and dynamic area with exciting opportunities to invent, collaborate and make a difference - potentially on a global scale.

At Ara we focus on practical, applied engineering with the aim of preparing you for a diverse spectrum of employment opportunities, both in New Zealand and overseas. An Ara engineering qualification gives employers a clear signal that you have the skills, knowledge and practical experience needed to be effective in the workplace from day one.



Qualifications	Level	Full-time	Part-time	Applications due	Start date
Introduction to Engineering Design DE	2	-	1 day p/w	All year	February
Engineering Design DE	3	-	1 day p/w	All year	February
New Zealand Certificate in Study and Career Preparation	3	6 months	✓	All year	Feb/July
New Zealand Certificate in Study and Career Preparation	4	6 months	✓	All year	Feb/July
Diploma in Computer Aided Design	6	1 year	✓	All year	Feb/July
NZ Diploma in Engineering (Civil)	6	2 years	✓	All year	Feb/July
NZ Diploma in Engineering (Electrical)	6	2 years	✓	All year	February
NZ Diploma in Engineering (Electronics)	6	2 years	✓	All year	February
NZ Diploma in Engineering (Mechanical)	6	2 years	✓	All year	Feb/July
Bachelor of Engineering Technology (Civil)	7	3 years	✓	All year	Feb/July
Bachelor of Engineering Technology (Electrical)	7	3 years	✓	All year	February
Bachelor of Engineering Technology (Mechanical)	7	3 years	✓	All year	Feb/July
Graduate Diploma in Computer Aided Design	7	1 year	✓	All year	Feb/July
Master of Sustainable Practice	9	1.5 years	✓	All year	Feb/July

Recommended subjects: Physics, maths, calculus, ICT, graphics, technology/electronics, English-rich subjects or relevant industry experience.

Potential careers: CAD manager or designer, computer engineering technician, electrical technician, engineering technologist, mechanical engineering technician, mechanical engineering technologist, structural design technician, transportation infrastructure design technician, water and wastewater systems technician.

Architectural Studies

Whether you choose to study architectural technology, interior design, construction management or quantity surveying, our team of design and architectural professionals can equip you with the skills and knowledge you need to succeed in these fields. You'll learn about the variety of solutions that can be applied to design challenges, and how excellent visual, oral and written communication can be used to help smooth a project's way.



Qualifications	Level	Full-time	Part-time	Applications due	Start date
New Zealand Certificate in Study and Career Preparation	4	6 months	✓	All year	Feb/July
New Zealand Diploma in Interior Design (Residential)	5	1 year	✓	All year	February
New Zealand Diploma in Architectural Technology	6	2 years	✓	All year	February
New Zealand Diploma in Interior Design (Commercial)	6	-	✓	All year	Feb/July
New Zealand Diploma in Construction (with strands in Construction Management and Quantity Surveying)	6	2 years	✓	All year	Feb/July
Bachelor of Architectural Studies	7	3 years	-	All year	February
Bachelor of Construction (with strands in Construction Management and Quantity Surveying)	7	3 years	✓	All year	Feb/July
Graduate Diploma in Construction Management	7	1 year	✓	All year	Feb/July
Graduate Diploma in Quantity Surveying	7	1 year	✓	All year	Feb/July
Master of Sustainable Practice	9	1.5 years	✓	All year	Feb/July

Recommended for entry: Maths, art, design, ICT, technology, graphics, English-rich subjects or relevant industry experience.

Potential careers: Architectural/CAD technician, architectural designer, consultant, furniture designer, interior designer, 3D architectural modeller, quantity surveyor, estimator, construction manager.



Ara Hauora Health

Health Sector

When you choose to study a health-related subject at Ara, you'll learn in a supportive environment and be among the most sought after health graduates in the country. During your programme you'll form strong relationships with your tutors, who are each registered and currently in practice. Hands-on learning is our focus and this is supported by excellent facilities (such as clinical practice units, scrub bays, laboratories, SIM pads, mock home environments and programmable mannequins) and extensive work placement opportunities.



Qualifications	Level	Full-time	Part-time	Applications due	Start date
New Zealand Certificate in Study and Career Preparation	3	6 months	✓	All year	Feb/July
New Zealand Certificate in Study and Career Preparation	4	6 months	✓	All year	Feb/July
New Zealand Diploma in Enrolled Nursing	5	18 months	-	All year	March
Competency Assessment Programme - Enrolled Nurse	5	9 weeks	-	All year	Jan/June/Oct
Competency Assessment Programme - Registered Nurse	7	9 weeks	-	All year	Jan/June/Oct
Bachelor of Nursing**	7	3 years	-	30 April/30 Sept	Feb/July
Bachelor of Nursing*** (articulated with University of Canterbury Masters of Health Sciences Professional Practice (Nursing))	7 - 9	2 years	✓	All year	February
Graduate Certificate in Nursing Practice	7	-	✓	All year	Various
Graduate Diploma in Nursing	7	1 year	✓	All year	Various
Bachelor of Medical Imaging	7	3 years	-	1 Sep	February
Bachelor of Midwifery	7	3 years	-	1 Sep	January
Bachelor of Musculoskeletal Health	7	3 years	-	All year	February
Postgraduate Certificate in Professional Supervision	8	6 months	✓	All year	Various
Postgraduate Certificate in Health Science	8	6 months	✓	All year	Feb/July
Postgraduate Diploma in Health Science	8	1 year	✓	All year	Feb/July
Master of Health Science	9	-	✓	All year	Feb/July
Master of Nursing	9	-	✓	All year	Feb/July
Master of Sustainable Practice	9	1.5 years	✓	All year	Feb/July

**Open to students with a relevant degree. *Applications must be placed at UC as well as Ara for this programme.

**This programme starts in Christchurch in February and July, and in Timaru in February only.

Recommended subjects: Physics, chemistry, biology, maths, science, health, English-rich or relevant industry experience.

Potential careers: Enrolled nurse, midwife, radiographer, registered nurse.

Human Services

Human services is a field which offers rewarding careers for individuals who are able to support the emotional needs of others. At Ara you'll be taught by a dedicated team of qualified professionals with extensive experience across a broad range of social work environments. Our qualifications are highly respected in the community, and include opportunities to gain real-world experience working with people who need specialised attention.



Qualifications	Level	Full-time	Part-time	Applications due	Start date
New Zealand Certificate in Health and Wellbeing (Social and Community Services)	4	1 year	✓	All year	Feb/July
Bachelor of Social Work	7	4 years	✓	31 October	February
Postgraduate Certificate in Professional Supervision	8	6 months	✓	All year	Various

Recommended subjects: English-rich subjects or relevant industry experience.

Potential careers: Community support worker, mental health and addiction support worker, social worker, youth worker.

Sport, Nutrition & Health Promotion

The rapidly expanding areas of sports science, nutrition and health promotion offer a wide range of exciting career opportunities. At Ara, you'll learn from experienced professionals in modern learning spaces with state-of-the-art equipment. Depending on the level of your qualification, you may also have the opportunity to undertake a significant industry project or work placement.



Qualifications	Level	Full-time	Part-time	Applications due	Start date
New Zealand Certificate in Exercise	4	6 months	✓	All year	Feb/July
Bachelor of Applied Science (Human Nutrition)	7	3 years	✓	All year	February*
Bachelor of Applied Science (Physical Activity and Health Promotion)	7	3 years	✓	All year	February*
Bachelor of Applied Science (Sport and Exercise Science)	7	3 years	✓	All year	February*

*July intake may also be available.

Recommended subjects: Science, biology, chemistry, physics, maths, health and English-rich subjects or relevant industry experience.

Potential careers: Sports scientist, nutritionist, health promotor, sports coach, strength and conditioning coach, fitness instructor, personal trainer, corporate health consultant.

Ara Whakamanuhiri Hospitality & Service Industries

Cookery, Bakery, Hospitality, Travel & Tourism

If you're a people-person with an excellent sense of customer service, you'll thrive in the fast-paced hospitality, travel and tourism sectors. Our programmes are very practical and designed to equip you with the hands-on skills employers need. You'll learn from highly experienced tutors - many of whom continue to work in the industry - and graduate with excellent employment prospects.



Qualifications	Level	Full-time	Part-time	Applications due	Start date
Hospitality Supported Learning DE	1	-	2 half days p/w	All year	February
Hospitality Supported Learning YG	2	7 months	-	All year	February
New Zealand Certificate in Tourism and New Zealand Certificate in Hospitality YG	2	8 months	-	All year	March
New Zealand Certificate in Hospitality DE	2	-	2 days p/w	All year	February
Introduction to Hospitality DE	2	-	1 day p/w	All year	February
Introduction to Food Processing DE	2	-	1 day p/w	All year	February
Hospitality Career Pathway DE	3	-	1 day p/w	All year	February
New Zealand Certificate in Food and Beverage Service (with Barista and Café Service strands)	3	6 months	-	All year	Feb/July
New Zealand Certificate in Food and Beverage Service (with Barista and Café Service strands - Workplace)	3	18 weeks	-	All year	Feb/July
New Zealand Certificate in Cookery DE	3	-	2 days p/w	All year	February
New Zealand Certificate in Cookery PT YG	3	6 months	-	All year	Feb/July
New Zealand Certificate in Tourism	3	6 months	-	All year	Feb/July
New Zealand Certificates in Tourism and Travel	3-4	1 year	-	All year	Feb/July
New Zealand Certificate in Food and Beverage Service	3-4	1 year	-	All year	Feb/July
New Zealand Certificate in Food and Beverage Service (with Restaurant Services strand)	4	6 months	-	All year	July
New Zealand Certificate in Baking (Generalist - Career Baker)	4	1 year	-	All year	February
New Zealand Certificate in Cookery PT HT	4	1 year	-	All year	Feb/July
New Zealand Diploma in Cookery (Advanced - Cookery Strand)	5	1 year	-	All year	Feb/July
New Zealand Diploma in Cookery (Advanced - Patisserie Strand)	5	1 year	-	All year	February
New Zealand Diploma in Hospitality Management	5	1 year	-	All year	Feb/July
New Zealand Diploma in Hospitality Management	6	1 year	-	All year	Feb/July
Bachelor of International Tourism and Hospitality Management	7	3 years	✓	All year	Feb/July
Master of Sustainable Practice	9	1.5 years	✓	All year	Feb/July

Recommended subjects: English-rich subjects, maths or relevant industry experience.

Potential careers: Baker, barista, bartender, café chef, caterer, chef de partie, commis chef, concierge, food and beverage manager, front office receptionist, housekeeper, pastry chef, porter, supervisor/manager, waiter, travel consultant.

Hair & Beauty

A career in hair or beauty offers endless potential across many industries and can take you around the world. At Ara you'll learn from industry professionals who will teach you both theory and practical skills in our modern salons and clinics. You'll also gain valuable experience by operating clinic and salon days with real clients. By the time you graduate you'll be industry-ready and highly capable with good problem solving skills.



Qualifications	Level	Full-time	Part-time	Applications due	Start date
Beauty Therapy and Salon Skills DE	2	-	1 day p/w	All year	February
New Zealand Certificate in Salon Skills (Introductory) DE	2	-	2 days p/w	All year	February
New Zealand Certificate in Salon Skills (Introductory) YG	2	6 months	-	All year	July
New Zealand Certificate in Barber Skills	3	34 weeks	-	All year	February
New Zealand Certificate in Hairdressing (Salon Support) YG	3	34 weeks	-	All year	February
New Zealand Certificate in Hairdressing (Salon Support)	3	34 weeks	-	All year	February
New Zealand Certificate in Makeup and Skincare	3	6 months	-	All year	July
New Zealand Certificate in Hairdressing (Emerging Stylist)	4	34 weeks	-	All year	February
New Zealand Certificate in Beauty Therapy	4	34 weeks	-	All year	February
Diploma in Beauty Therapies and Epilation	5	34 weeks	-	All year	February

Recommended for entry: English-rich subjects, maths or relevant industry experience.

Potential careers: Barber, beautician, beauty therapist, cosmetics consultant, electrolysis technician, hairdresser, hair colourist, hair stylist, image consultant, make-up artist, nail technician, salon manager, skincare consultant, spa manager.



Ara Reo, Ahurea & Ako Language, Culture & Education

Early Childhood Education

Early childhood education enables you to enjoy a rewarding career providing a valuable community service. Qualified professionals are in strong demand in New Zealand at all levels and our programmes will prepare you well for a career in this sector. Our industry connections ensure that your study leads to employment and career opportunities. In addition, work placements will give you an insight into the industry and allow you to demonstrate your strengths while making employment connections.



Qualifications	Level	Full-time	Part-time	Applications due	Start date
New Zealand Certificate in Early Childhood Education and Care	3	6 months	-	31 January	February
New Zealand Certificate in Early Childhood Education and Care	4	6 months	-	8 July	July

Potential careers: Childcare support worker, health promotion educator, home-based carer, nanny, pregnancy and parenting educator, teacher aide.

English Language

Ara is internationally recognised as one of the best English language training centres in New Zealand, with students from more than 30 countries choosing to study with us to improve their English speaking, reading and writing. We offer a range of programmes that will equip you with the professional language skills needed in the global marketplace. In addition to high quality tuition from our friendly, professional tutors, you'll have the opportunity to develop your skills on a daily basis by mixing with other English speaking students on campus.

Qualifications	Level	Full-time	Part-time	Applications due	Start date
NZ Certificate in English Language (with specialisation)	1-2	6 months	✓	All year	Feb/July
NZ Certificate in English Language (with specialisation)	3-5	6 months	-	All year	Feb/July
Certificate in English as an Additional Language	4	min 4 wks	-	All year	All year

Potential careers: English language skills will increase your opportunities for successful employment and higher education in New Zealand and internationally.



Japanese Language

Japanese is a highly relevant language for anyone serious about commerce, trade and international relations, and for anyone wishing to experience Japan's fascinating culture and lifestyle. We cater for all levels with beginner courses through to degree-level programmes. All our programmes focus on attaining a high level of spoken fluency and are taught by highly qualified professionals.


Qualifications	Level	Full-time	Part-time	Applications due	Start date
Certificate in Japanese (Foundation)	3	6 months	-	All year	February
Certificate in Japanese	4	1 year	-	All year	February
Bachelor of Language (Japanese)	7	3 years	-	All year	February

Recommended subjects: English, foreign languages.

Potential careers: Bilingual advisor, events coordinator, flight attendant, government & community worker, immigration officer, interpreter, journalist, presenter, proof reader, teacher, tour guide, translator, travel advisor.

Māori/Pasifika Language & Culture

Our Māori and Pasifika language programmes are designed to give you a distinct advantage in today's competitive employment market, and to enhance your ability to communicate within family and community environments. Our expert tutors are passionate about sharing their knowledge, skills and industry connections, and will work with you to discover your strengths and help you succeed in a stimulating and supportive whānau environment.

Qualifications	Level	Full-time	Part-time	Applications due	Start date
New Zealand Certificate in Study and Career Preparation	3	6 months	✓	All year	Feb/July
Ka Hao Te Rangatahi 	2 and 3	-	1 day a week	All year	February
Te Pōkaiitahi Reo (Rumaki, Reo Rua) New Zealand Certificate in Te Reo Māori (Immersion, Bilingual)	3	-	1 year or 6 months	10 August	Feb/July
Certificate in Samoan Language (Gagana Samoa)	5	-	6 months	All year	July
Te Pōkaiitahi Reo (Rumaki, Reo Rua) New Zealand Certificate in Te Reo Māori (Immersion, Bilingual)	5	-	1 year	February	Feb/July
Te Pōkaiitahi Reo (Rumaki) New Zealand Certificate in Te Reo Māori (Immersion)	6	-	1 year	15 February	Feb/July
Bachelor of Māori Language and Indigenous Culture - Te Ohoka	7	3 yrs	-	All year	Feb/July
Master of Sustainable Practice	9	15 years	✓	All year	Feb/July

Recommended subjects: Te Reo Māori, English, physical education, outdoor education, drama.

Potential careers: Teacher, translator, broadcaster, strategic advisor, Māori/Pasifika researcher, tourism operator, health promoter, performer/composer, entrepreneur, community support worker, cultural advisor, marketing, governance.

Workskills

Workskills caters specifically for young adults with learning disabilities. It's designed to equip students with the skills and confidence they need to be able to make a meaningful contribution to their community and to enjoy a satisfying work life.

Qualifications	Level	Full-time	Part-time	Applications due	Start date
New Zealand Certificate in Skills for Living for Supported Learners	1	1 year	-	All year	February
Skills for Working for Supported Learners	1	6 months	-	All year	February
New Zealand Certificate in Foundation Skills	1	6 months	-	All year	July

Potential careers: Kitchenhand, café worker, supermarket assistant, warehouse worker, aged care assistant, nursery worker.

Teacher Education

Brilliant educators have an aptitude for outstanding communication and a passion for working with and supporting others to achieve their goals. Our tutors all have recent experience of both teaching and teacher training. We can offer excellent facilities and resources, and valuable industry connections. Tertiary teaching qualifications need candidates to already be working with adult/tertiary learners.

Qualifications	Level	Full-time	Part-time	Applications due	Start date
Workplace Assessment	4	-	✓	All year	Mar/Jun/Aug
CELTA (Certificate in Teaching English to Speakers of Other Languages)	5	4 weeks	✓	All year	All year
New Zealand Certificate in Adult and Tertiary Teaching	5	-	✓	All year	All year
New Zealand Certificate in Adult Literacy and Numeracy Education (Vocational/Workplace)	5	-	✓	All year	All year
Graduate Diploma in Tertiary Learning and Teaching	7	-	✓	All year	All year
Postgraduate Certificate in Professional Supervision	8	6 months	✓	All year	Feb/April/July/Sep

Potential careers: Corporate trainer, curriculum planner, teacher of adult learners, tutor, teacher of English as a second language, workplace assessor.

Sustainability & Outdoor Education

Our sustainability and outdoor education programmes are unique in Australasia due to their focus on sustainability. With a 50/50 split between theory and practical, much of your learning will take place out and about in the Canterbury region. You'll learn from highly qualified and experienced tutors who are passionate about equipping you with the skills and knowledge you need to lead and inspire others.

Qualifications	Level	Full-time	Part-time	Applications due	Start date
New Zealand Certificate in Foundation Skills (TOA Sports)	2	6 months	✓	All year	July
New Zealand Certificate in Foundation Studies ^{DE} (Sustainability & Outdoor Education)	2	-	1 day p/w	All year	February
New Zealand Certificate in Foundation Studies ^{DE} (Sustainability & Outdoor Education)	3	-	1 day p/w	All year	February
New Zealand Certificate in Outdoor and Adventure Education (Multi-skilled)	4	1 year	✓	All year	Feb/July
Bachelor of Sustainability and Outdoor Education	7	3 years	✓	All year	Feb/July
Graduate Diploma in Sustainability and Outdoor Education	7	1 year	✓	All year	Feb/July
Master of Sustainable Practice	9	1.5 years	✓	All year	Feb/July

**Early application advised.*

Recommended subjects: English, maths, physical education, biology, geography, social studies.

Potential careers: Outdoor instructor, adventure or eco-tourism guide, conservation worker, environmental educator, sustainability advisor, teacher



Zahra Hussaini
Laboratory Science graduate

**“Why Ara?
Because of the links
with industry.”**

Ara Pūtaiao, Ahuwhenua & Kararehe Science, Agriculture & Animal Science

Science

The science industry is constantly developing and expanding, resulting in a wide range of exciting career opportunities. Within state-of-the-art facilities at Ara you'll learn from expert tutors with extensive industry and research experience. All our applied science programmes are highly practical. Depending on your programme choice, you may also have the opportunity to undertake a substantial work placement or industry project.



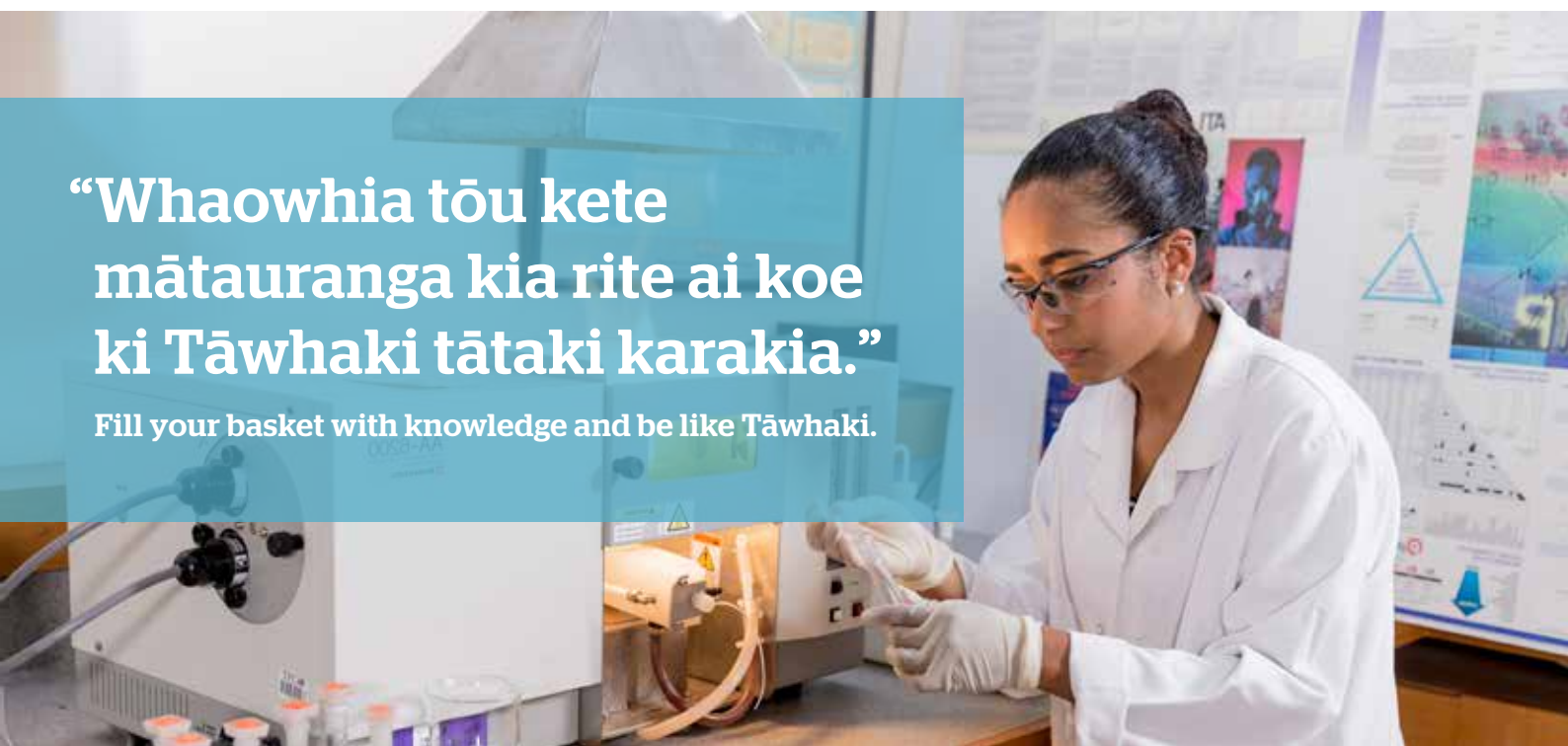
Qualifications	Level	Full-time	Part-time	Applications due	Start date
New Zealand Certificate in Study and Career Preparation	3	6 months	✓	All year	Feb/July
New Zealand Certificate in Study and Career Preparation	4	6 months	✓	All year	Feb/July
New Zealand Diploma in Applied Science	5	1 year	✓	All year	Feb/July
New Zealand Diploma in Applied Science	6	1 year	✓	All year	Feb/July
Graduate Diploma in Laboratory Technology	7	1 year	✓	All year	Feb/July

Recommended subjects: Science, biology, chemistry, physics, maths, health and English-rich subjects or relevant industry experience.

Potential careers: Environmental monitoring, food technologist, laboratory technician, researcher, human health, industrial product testing.

“Whaowhia tōu kete
mātauranga kia rite ai koe
ki Tāwhaki tātaki karakia.”

Fill your basket with knowledge and be like Tāwhaki.



Agribusiness

Our agribusiness management programme is designed to enable you to manage the many complex aspects of agriculture including business, geography, sociology and conservation. By gaining skills and knowledge in these areas, you will be equipped for a wide variety of career and business opportunities.



Qualifications	Level	Full-time	Part-time	Applications due	Start date
New Zealand Diploma in Agribusiness Management	5	-	✓	All year	Feb/July

Recommended subjects: English-rich subjects, maths or relevant industry experience, biology.

Potential careers: Farm management, primary industry production manager.

Animal Science

If you have a compassionate attitude and you can relate to people who love animals, you'll thrive in our animal science programmes. You'll gain extensive practical experience, thanks to our excellent facilities on campus and the relationships our tutors have fostered within the industry.

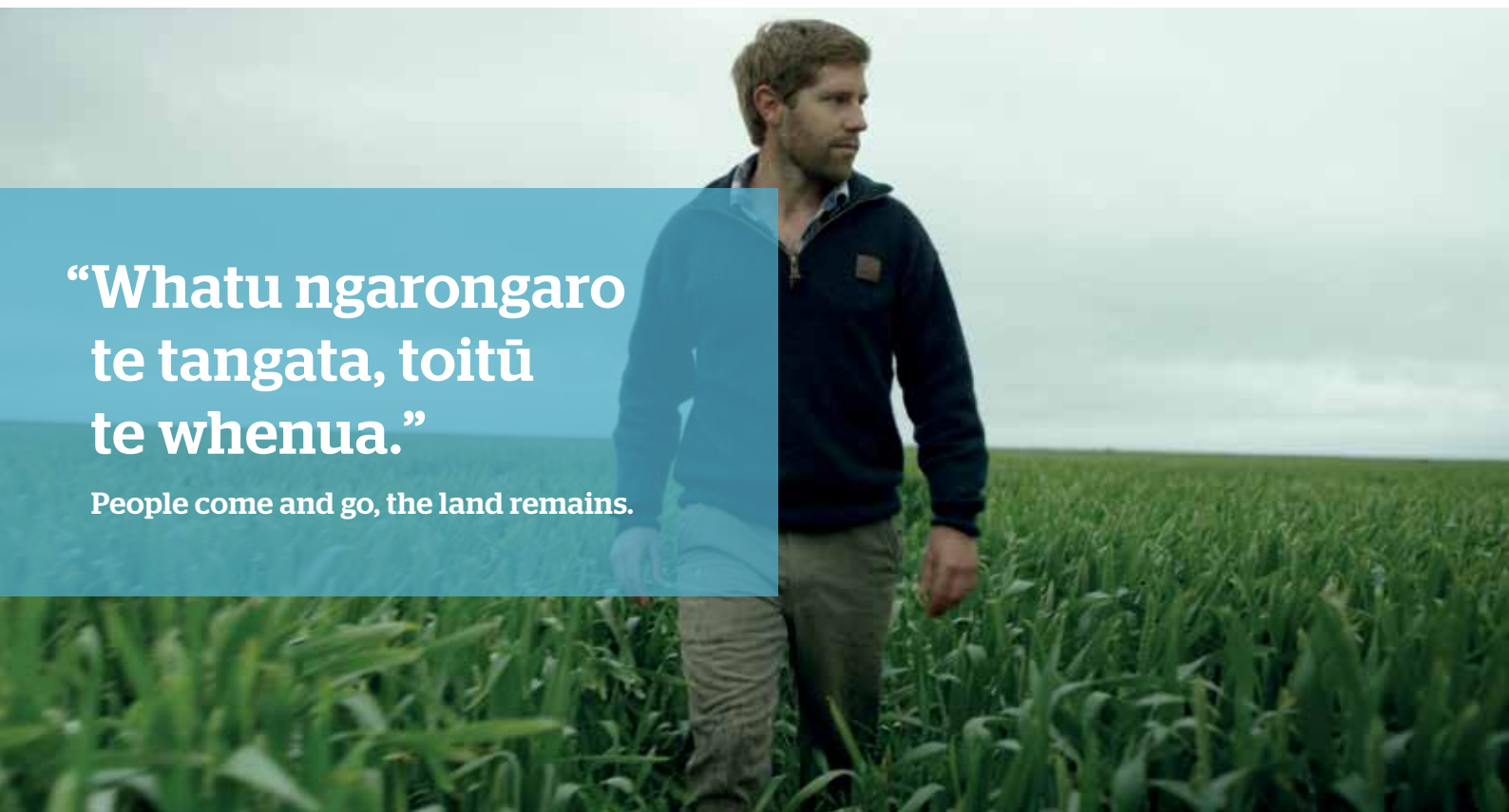
Qualifications	Level	Full-time	Part-time	Applications due	Start date
New Zealand Certificate in Study and Career Preparation	3	6 months	✓	All year	Feb/July
New Zealand Certificate in Animal Management (with Companion Animal Strand)	4	1 year	-	30 Oct	February
New Zealand Certificate in Animal Technology (with Veterinary Nursing Assistant Strand)	5	1 year	✓	30 Oct	February
New Zealand Diploma in Veterinary Nursing	6	1 year	✓	30 Oct	February

Recommended subjects: Biology, maths and English-rich subjects or relevant industry experience.

Potential careers: Veterinary nurse, animal breeder, animal nutritionist, kennel or cattery manager, research technician, zoo or wildlife park worker.

“Whatu ngarongaro
te tangata, toitū
te whenua.”

People come and go, the land remains.





Marysha Campbell
Animal Science graduate

**“Why Ara? Because
I got straight into
workplace training.”**



Ivan Hart-Floyd
Carpentry graduate (ITaB)

**“It’s given me passion
for carpentry.”**

Ara-ā-rehe Trades

Automotive Trades

The automotive industry is one of the largest in the world, offering a wide range of careers for motivated problem solvers with a can-do attitude and practical skills. Within industry-standard facilities, Ara's team of experienced automotive tutors will ensure you gain the knowledge and practical skills employers need. Their industry connections can also help you access the best jobs.



Qualifications	Level	Full-time	Part-time	Applications due	Start date
Introduction to Agricultural Engineering DE	2	-	1 day p/w	All year	February
Introduction to Automotive Trades DE	2	-	1 day p/w	All year	February
Introduction to Automotive and Engineering DE	2	-	2 days p/w	All year	February
New Zealand Certificate in Foundation Skills (Introduction to Automotive and Engineering) YG	2	6 months	-	All year	Feb/July
New Zealand Certificate in Collision Repair and Automotive Refinishing PT HT	3	6 months	✓	All year	Feb/July
New Zealand Certificate in Automotive Engineering PT HT	3	1 year	✓	All year	February
New Zealand Certificate in Automotive Engineering (Heavy)	3	1 year	✓	All year	February
New Zealand Certificate in Light Automotive Engineering	4	-	2.5 years	All year	Feb/July

Recommended subjects: Technology, English literacy, maths or relevant industry experience.

Potential careers: Automotive engineer, automotive refinisher, automotive service engineer, automotive technician, mechanic, panel beater, spray painter, workshop foreman.

Engineering Trades

Engineering trades involves using precision machinery to create or repair functional things, from the tools that tradespeople use, right up to large-scale projects such as ships, skyscrapers and bridges. At Ara you'll apply theory to practical sessions, building new skills and experiences that you can take into the workplace and a rewarding career.

Qualifications	Level	Full-time	Part-time	Applications due	Start date
Introduction to Agricultural Engineering DE	2	-	1 day p/w	All year	February
New Zealand Certificate in Mechanical Engineering PT HT	3	1 year	-	All year	Feb/July
New Zealand Certificate in Mechanical Engineering (Trade)	4	-	4 years	All year	All year
New Zealand Certificate in Engineering Fabrication (Trade)	4	-	4 years	All year	All year

Recommended subjects: Metalwork, maths, graphics, technology, English-rich subjects or relevant industry experience.

Potential careers: Fabricator, fitter and turner, plastics processor, sheetmetal worker, toolmaker, welder.

Construction

Success in the construction industry comes from maintaining quality workmanship and being highly motivated. You need a strong work ethic and a co-operative attitude. At Ara we encourage your enthusiasm for construction careers, helping you develop the knowledge, attention to detail and practical skills you need to gain a firm foothold in the industry. We can help you find relevant work experience with building companies and assist with your applications to become an apprentice.



Qualifications	Level	Full-time	Part-time	Applications due	Start date
Introduction to Construction (1 day) DE	2	-	1 day p/w	All year	February
Introduction to Construction (2 day) DE	2	-	2 days p/w	All year	February
New Zealand Certificate in Foundation Skills (Construction) YG	2	6 months	-	All year	Feb/Jul
New Zealand Certificate in Study and Career Preparation (Construction Trades) PT HT	3	-	2 days p/w	All year	February
New Zealand Certificate in Construction Trade Skills (Carpentry) HT DE YG PT	3	1 year	-	All year	Feb/Jul
New Zealand Certificate in Carpentry (ITAB)	4	-	3-4 years	All year	All year
New Zealand Certificate in Construction Related Trades (Supervisor)	4	-	1 yr	All year	February
New Zealand Diploma in Construction (with strands in Construction Management and Quantity Surveying)	6	2 years	✓	All year	Feb/Jul

Recommended subjects: English literacy, maths, technology or relevant industry experience.

Potential careers: Brick or block layer, builder, carpenter, construction site supervisor, leading hand, stonemason, tiler, quantity surveyor, construction manager, estimator.

Electrical

Electrical engineering trades suit analytical, solutions-focused people. At Ara, your training will take place in workshops with the latest tools and technology including a simulated subdivision and power distribution training rig. You'll also be given work experience and apprenticeship opportunities to apply your knowledge and get on the road to employment.

Qualifications	Level	Full-time	Part-time	Applications due	Start date
New Zealand Certificate in Foundation Skills (Electrical Engineering) YG	2	6 months	-	All year	Feb/Jul
Manufacturing & Technology Vocational Pathway (Electrical Engineering) DE	2	-	2 days p/w	All year	February
New Zealand Certificate in Electrical Engineering (Theory) PT HT	3	1 year	-	All year	Jan/Jul
New Zealand Certificate in Electrical Engineering (Theory and Practice - Trade)	4	-	1 year	All year	January

Recommended subjects: English literacy, maths, technology or relevant industry experience.

Potential careers: Cable jointer, domestic electrician, electrical supply technician, industrial electrician, line mechanic, mechanical fitter, telecommunications electrician.

Joinery

Joiners and furniture makers are skilled craftspeople who use specialised machinery to design, make and assemble doors, windows, kitchen/bathroom cabinetry, stairs and furniture. At Ara we can equip you with the knowledge, practical skills and attention to detail needed to gain a firm foothold in the industry. This includes theory and techniques from expert tutors, and the opportunity to practice your new skills with hands-on tasks and projects.



Qualifications	Level	Full-time	Part-time	Applications due	Start date
New Zealand Certificate in Construction Trade Skills (Joinery) PT HT	3	9 months	-	All year	Feb/July
New Zealand Certificate in Joinery (with strands in Cabinetry, Timber Doors and Windows, Timber Stairs and Laminate Fabrication)	4	-	4 years	All year	All year

Recommended subjects: Technology, English literacy, maths or relevant industry experience.

Potential careers: Boat builder, cabinet maker, furniture maker, joiner.

Painting & Decorating

Our certificates in pre trade painting and decorating include industrial safety, basic scaffolding, surface preparation and application techniques. After completing your programme you can transfer straight into an apprenticeship with an employer where you'll gain more experience on the job.

Qualifications	Level	Full-time	Part-time	Applications due	Start date
New Zealand Certificate in Construction Trade Skills (Painting and Decorating)	3	6 months	-	All year	Feb/July

Recommended subjects: Technology, English literacy, maths or relevant industry experience.

Potential careers: Painter and decorator.

Plumbing, Gasfitting & Drainlaying

Plumbing and gasfitting are great areas to get into if you're mechanically minded and you enjoy hands-on work and solving problems. You can earn well too. At Ara, you'll learn the knowledge and skills required to start your career in an apprenticeship or job offering further on-the-job training.

Qualifications	Level	Full-time	Part-time	Applications due	Start date
New Zealand Certificate in Plumbing, Gasfitting and Drainlaying PT HT (Pre Apprenticeship)	3	6 months	-	All year	Feb/July
New Zealand Certificate in Plumbing/New Zealand Certificate in Drainlaying	4	-	4 years	All year	January
New Zealand Certificate in Gasfitting	4	-	3 years	All year	All year

Recommended subjects: Technology, English literacy, maths or relevant industry experience

Potential careers: Plumber, gasfitter, drainlayer, self-employed tradesperson, building inspector, tutor, plumbing equipment salesperson, technical advisor, project manager.

Commercial Road Transport

Qualifications	Level	Full-time	Part-time	Applications due	Start date
New Zealand Certificate in Commercial Road Transport (Heavy Vehicle Operator)*	3	6 months	-	All year	March

Recommended subjects: Technology, English literacy, maths or relevant industry experience.

Potential careers: Driver

*This programme is delivered by Mainland Driving School in partnership with Ara and industry, and is only delivered in Timaru.

Kia Mataara!

Additional information

Levels of study at Ara

At Ara our focus is on flexible study options. That's why we have created various ways for you to gain qualifications and advance your training. There are a variety of levels for you to study, depending on where you want your career to lead you. You might start at an entry level foundation programme, or launch straight into a degree.

	Experience Ara Free junior and senior taster days. Short NCEA credit courses (STAR), holiday workshops and information sessions.
	Foundation/Bridging Programmes For those who need extra tuition in order to meet entry criteria we can tailor programmes to suit you and your aims. Entry criteria: Open entry (no academic entry criteria).
Level 1-3	Dual Enrolment Programmes Get a feel for tertiary study while you're still at school. You spend 1-2 days per week at Ara and earn NCEA credits in the subject of your choice. Entry criteria: Open entry for Year 11-13 students.
Level 1-4	Certificates: 40-120 Credits Entry criteria: Open entry or specified credits from a tertiary qualification at Levels 1-3, or specified NCEA credits, or equivalent.
Level 5-6	Diplomas: 120-240 Credits Entry criteria: Specified credits from a tertiary qualification at Levels 1-4, or specified NCEA credits, or equivalent.
Level 7	Bachelor Degrees: 360-480 Credits Entry criteria: Specified credits from a tertiary qualification at Levels 3-4, or specified NCEA credits at Levels 1-3, or equivalent.
Level 7	Graduate Diplomas and Certificates: 60-120 Credits Entry criteria: Academic entry. Degree graduates or relevant industry experience.
Level 8	Postgraduate Diplomas and Certificates: 60-120 Credits Entry criteria: Academic entry. Degree graduates or relevant industry experience.
Level 9	Masters: 180-240 Credits Entry criteria: Academic entry. Degree graduates or relevant industry experience.

Please note some programmes may have different requirements.

Key information

Phone - Contact Centre

0800 24 24 76

Mon-Thu, 8am-5pm | Fri, 9am-4.30pm

Visit us - City Campus, Christchurch

Admission & Enrolments, Rakaia Centre, Madras Street

Mon-Thu, 8am-5pm | Fri, 9am-4.30pm

During peak enrolment periods

Mon-Thu, 8am-6pm | Fri, 9am-4.30pm

Woolston Campus, Christchurch

Ensors Road

Mon-Thu 8am-5pm | Fri, 9am-4.30pm

During peak enrolment periods

Mon-Thu, 8am-6pm | Fri, 9am-4.30pm

Timaru Campus

32 Arthur Street. Mon-Fri, 8am-5pm

Ashburton Campus

37 Alford Forest Road. Mon-Fri, 8am-5.30pm

Oamaru Campus

44 Humber Street. Mon-Fri, 8.30am-4.30pm

Book a Campus Tour

Taking a campus tour is a great way to see Ara in action. You'll have the opportunity to look around and get a feel for what it would be like to study here. You can request a campus tour by filling out the online form found here: www.ara.ac.nz/book-a-tour

Open Days and Expos

To get a good insight into everything Ara has to offer you, visit us at one of our Open Days, or at one of the many Careers Expos around New Zealand.

Careers Expos

Auckland	Christchurch	Greymouth
Hamilton	Blenheim	Invercargill
Tauranga	Timaru	Wellington
Gisborne	Palmerston North	
New Plymouth	Kaikoura	
Nelson		

Student exchange

If you would like to complete some of your tertiary study in another country, the Ara student exchange programme offers opportunities for Ara degree students to study with our partner institutions all over the world.

To find out more email: exchanges@ara.ac.nz

Visit us at our Community Study locations

Bishopdale

Bishopdale Mall, Harewood Road

Hornby

Clock Tower Centre, Building 1,
1 Brynley Street, Hornby

Madras Street

City Campus, Madras Street

New Brighton

Corner Hawke Street and Shaw Avenue

Rangiora

14 Ashley Street, Rangiora

Timaru

32 Arthur Street, Timaru

Ashburton

37 Alford Forest Road, Allenton

Oamaru

44 Humber Street, Oamaru

Pūtea Scholarships

We offer a variety of scholarships every year and can advise you on the prizes and awards related to your chosen studies.

Academic achievement only applies to some grants and selection panels look at a variety of criteria like your financial need, place and field of study, and commitment and motivation. Our scholarship coordinator can help you with your applications.

Please email scholarships@ara.ac.nz or visit www.ara.ac.nz/scholarships



Want to find out more?

For details of all courses, including full entry criteria and how to apply, visit ara.ac.nz/search
Get in touch if you have any questions: **0800 24 24 76** | info@ara.ac.nz