



Our school is located in the heart of Mount Maunganui, in a beautifully restored heritage building.

Students can walk to nearby cafes and shops, as well as the beach. There is a large garden area to relax in, as well as two covered courtyards. Our classrooms have natural light, and there is a large student lounge and kitchen area.



The school size depends on the season:

Low season: (April - August) around 40 students

Shoulder season: (September - December) around 60 students

High season: (January - March) around 75 students



Students enjoying a class on our all-weather deck

Mount Maunganui Language Centre is registered as a Private Training Establishment by the New Zealand Qualifications Authority, and holds CATEGORY 1 status, the highest level achievable under the NZQA system.

Students who study for 14 weeks or more on a student visa are allowed to work part time.

Mount Maunganui Language Centre is a signatory to the Education (Pastoral Care of Tertiary and International Learners) Code of Practice 2021 (the Code).

Mount Maunganui Language Centre is a member of English New Zealand, and is an Authorised TOEIC Test Centre.



Tauranga - Mount Maunganui

Mount Maunganui is part of Tauranga City, a medium sized city with a population of around 125,000 people. It is a unique area with the city centre surrounded on both sides by the Pacific Ocean. For many years Mount Maunganui has been a favourite summer holiday destination for New Zealanders, and it is one of the most desirable places to live in New Zealand.

Climate

Summer: 20 - 27 degrees Celsius

Winter: 11 - 19 degrees Celsius



Mount Maunganui has been awarded the 'Best Beach in New Zealand' every year since 2014.



Location

A city that is not too small, not too large. The city most New Zealanders want to live in. Ranked the best beach in New Zealand for the past 4 years.

Client Satisfaction

In our most recent survey, students gave MMLC an average rating of 91% satisfaction, compared with the global average of 86.9%¹.

Academic Standards and Pathways

Our students pass their IELTS, Cambridge C1 Advanced, and B2 First exams. We have links with leading providers from Primary to MBA and everything in between.



The Warmest Welcome

Mount Maunganui Language Centre students gave our homestays a 96% rating for their warm welcome, compared with the global average of 90.9%².

Experience

The school was established in 1990 - we have a lot of experience and know how to take care of your clients.

We Love Our Agents

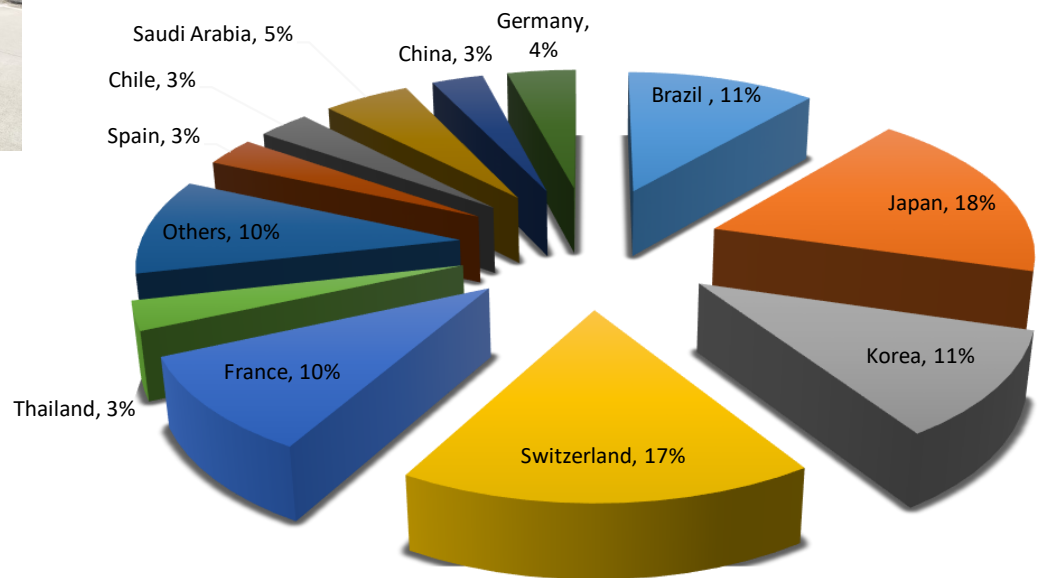
Over 85% of our bookings come via our partner network. In 2019 we forwarded over 50 direct enquiries to our international partners to follow up with. Our website generates leads for you.

1,2: i-Graduate English Language Barometer (ELB) survey of international students. The ELB survey asked the opinions of over 14,000 English Language Students worldwide, including Mount Maunganui Language Centre students.

Student Diversity

Thanks to our partners, we have students from around the globe. Below is a sample of the main nationalities we host in our school. The school normally has around 24 different nationalities over the course of a year. Our lessons also involve going into the local community to interact with New Zealand people.

We give your students a truly international experience.



Mount Maunganui is part of Tauranga City, with a total population of 125,000. The school is in downtown Mount Maunganui, close to shops, restaurants, cafes, movie theatres and of course the beach - which is only 750 metres away.

Students are picked up by our shuttle service and brought directly to Mount Maunganui, the journey takes around 2.5 hours. We can also arrange a direct domestic flight, which takes around 25 minutes.



Our homestay families are all within walking distance of the beach, and within 10 kilometres of the school. Most students come to school on foot, by bicycle, or bus. The average time to get to school is 20 minutes.

Students can also choose to stay in our school accommodation, with options located within the main school building as well as nearby. A private room and shared kitchen, bathrooms and living room are available.

Student Residence

In addition to homestay, we offer two student residence options:

On-site Accommodation

We have private rooms available within our school building, great for students who like to wake up late. This accommodation features:

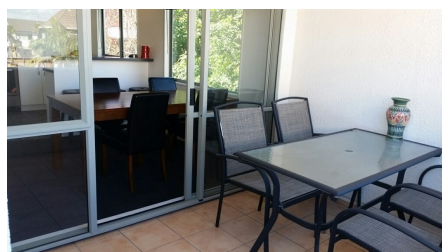
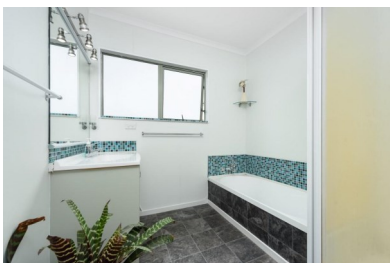
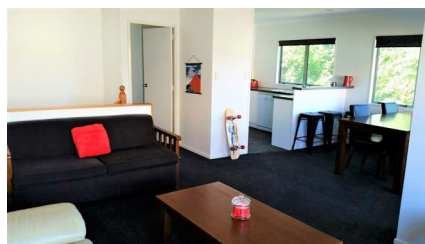
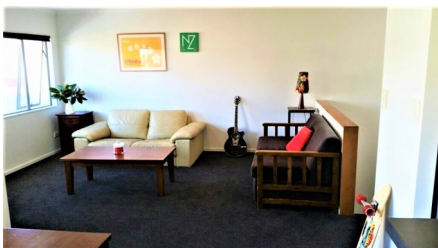
- Private, lockable bedrooms
- Shared bathrooms
- Living room, dining area
- Full size kitchen with oven, microwave, fridge
- TV, Wi-Fi
- Power and water included
- Outdoor courtyard
- Washing machine and rubbish disposal included



Student Residence - off-site

Our residence is a two-storey, three bedroom home, located 7 minutes' walk from the school. The residence is fully furnished and features:

- Three private, lockable bedrooms
- Two bathrooms
- Living room, dining area
- Full size kitchen with dishwasher, oven, microwave, fridge
- TV, Wi-Fi
- Power and water included
- Upstairs deck, downstairs garden
- Secure garage for bikes, sports equipment etc
- Washing machine and rubbish disposal included



Our classes focus on building students' fluency and communication skills. We do this by basing classes around one particular theme per week, which is explored in depth over the course of the study week. This method makes sure that students are taught from a 360° approach - grammar, speaking, listening, reading, writing, and pronunciation. Students can track their progress through the weekly tests, and additional help is always available.

Daily Timetable (sample)

9.00am	Warm Up
9.10am	Grammar/Vocabulary Development/Reading
9.50am	Conversation/Pronunciation
10.40am	Morning Tea/ Social Conversation
11.00am	Listening / Speaking/Writing
12.00pm	Lunch
1.00pm	Conversation Skills/ Fluency Activities
	Out of Class Study
	Exam Preparation*
	Or Activity Programme*
1.55pm	Break
2.05pm	as above, continued
3.00pm	Class Finish**

* Depending on students' course choice

** Classes finish at 12.00 pm on Fridays

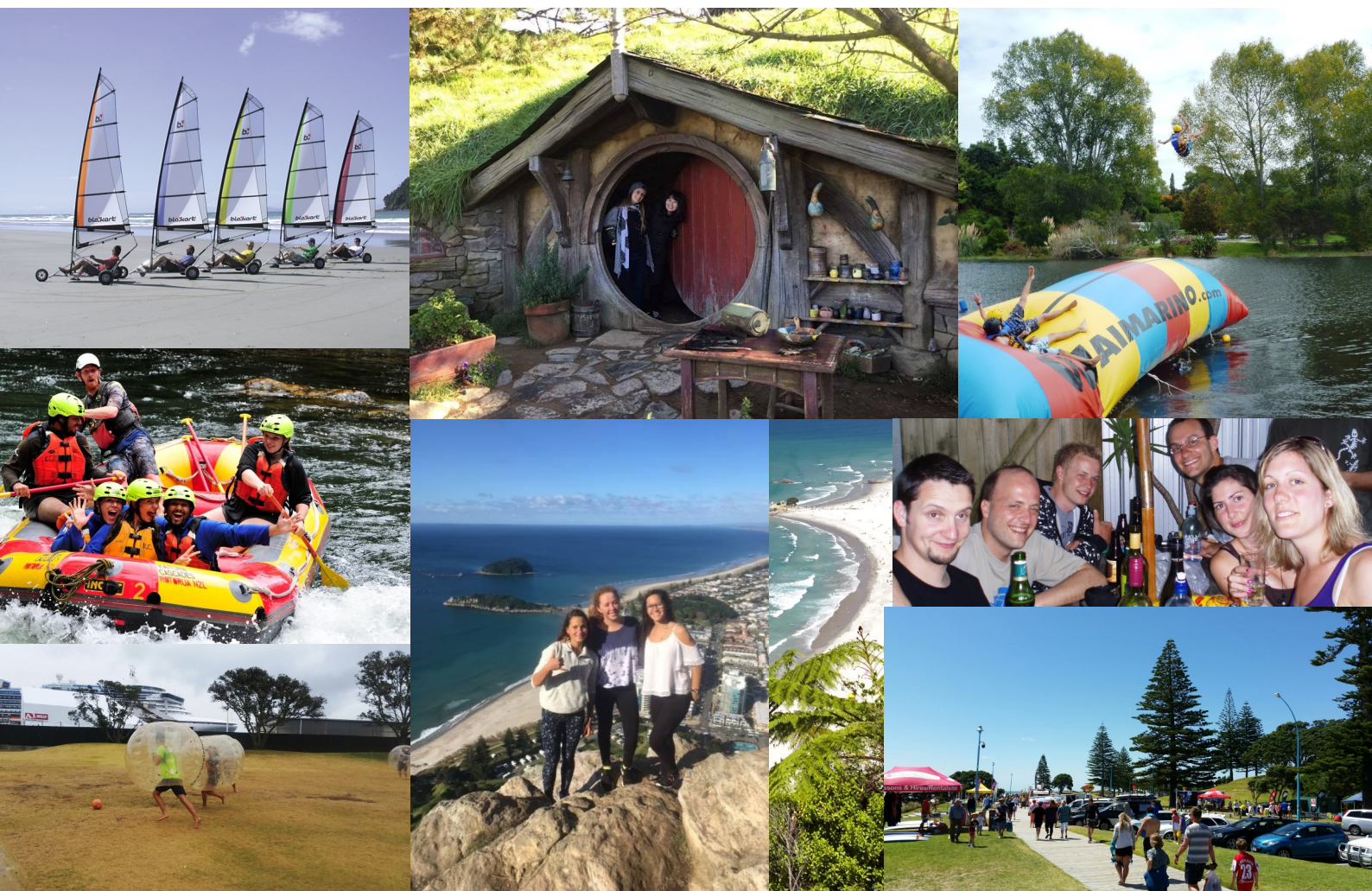
Key Features

- A low number of students per class - average 7, maximum 12
- Weekly testing so students can track their progress
- Modern teaching methods - including multimedia and internet based
- Student lending library service for reading improvement



On the first day students should be at school by 8.45 am. Students are given an orientation programme which involves an explanation of all school policies and procedures, school tour, introduction to key staff members, and level testing for class placement. Testing involves a grammar test, a writing component, and an interview.

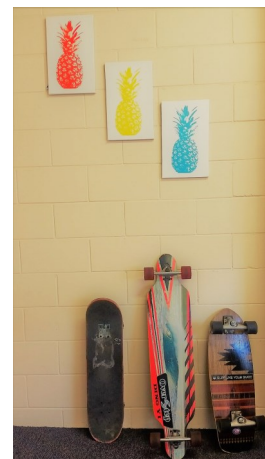
At MMLC we believe learning is continuous, both inside and outside the classroom. So we offer a wide range of sporting, cultural and leisure activities for students both after school and on weekends. Students have the chance to practice English in a relaxed environment with their friends from other countries.



Mount Maunganui has been awarded the 'Best Beach in New Zealand' every year since 2014¹.

¹TripAdvisor 'Best Beach in New Zealand' Travellers' Choice Awards.

This is our student carpark :)



General Enquiries: Geoff Butler geoff@mmlc.co.nz

Web: www.study-english.com

Tel: +64 7 575 0146

24 Hour
Emergency Tel: +64 21 722 904

Address: 463 Maunganui Road,
Mount Maunganui, 3116
New Zealand



www.study-english.com

